

ASSESSMENT DAY

College of Arts and Sciences

Associate in Arts Degree

April 27, 2020

Strengths

Challenges

Recommendations

Academic Assessment

	LEVEL	FOCUS	CONDUCTED BY	FREQUENCY
Academic Success Committee	Program	<ul style="list-style-type: none"> Quality of assessment practices 	Committee of peers	Years 1 & 2
Instructional Program Review	Program / Cluster	<ul style="list-style-type: none"> Enrollment, retention, completion Industry certifications and job placement Program budget and staffing Advisory committees Curriculum changes 	Committee of peers	Year 3
Assessment Day	Course/ Program	<ul style="list-style-type: none"> Enrollment by demographics Graduation and retention Average class size Course success rate Placement rate SLOs, PLOs and ILOs 	Program Chair and Faculty	Years 1, 2, 3

Program

[700000 - Associate of Arts Degree](#)

Last Assessment Day – Action Items

Assessment Day (02-08-2019)

- Add more courses to the Gateway initiative;
- Explore options for norming “grading”;
- Consider ENC1101 and ENC1102 as a pre- or co- requisite for some courses;
- Continue to build adjunct support;
- Continue cross training;
- Research possibility of preventing students from taking an online course if they have failed one online course;
- Better marketing for guaranteed schedule and speed week schedule;
- Look at sequence of courses for AA program;
- Work with IR to see possibility of implementing MAAP or the Proficiency Profile survey

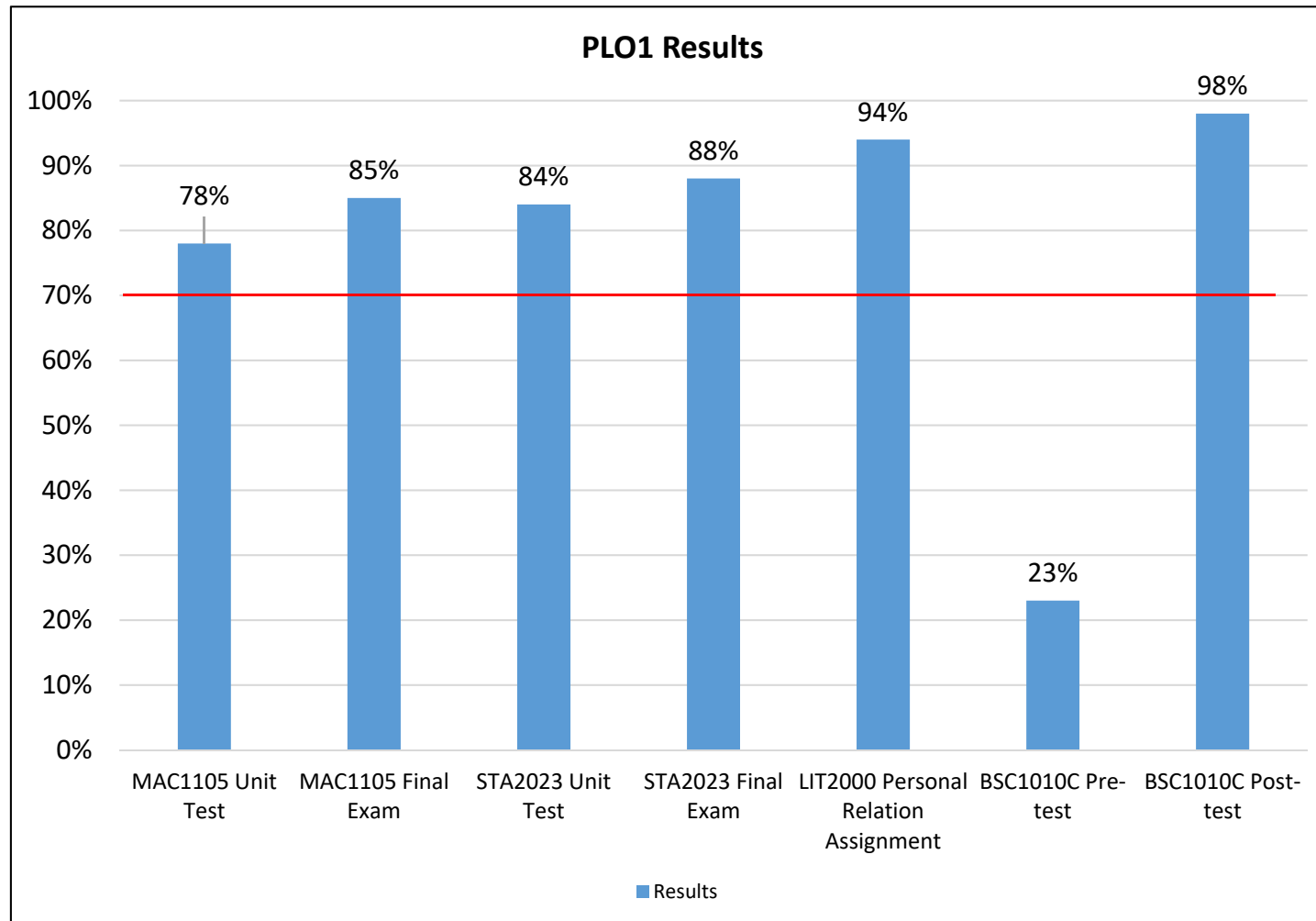
- **For IR:** Add Languages level I and II to the list of courses

Program Learning Outcomes

AA Degree #70000

1. Critical/Creative Thinking
2. Communication
3. Cultural Literacy
4. Information and Technical Literacy

Assessment Results 2018-2019

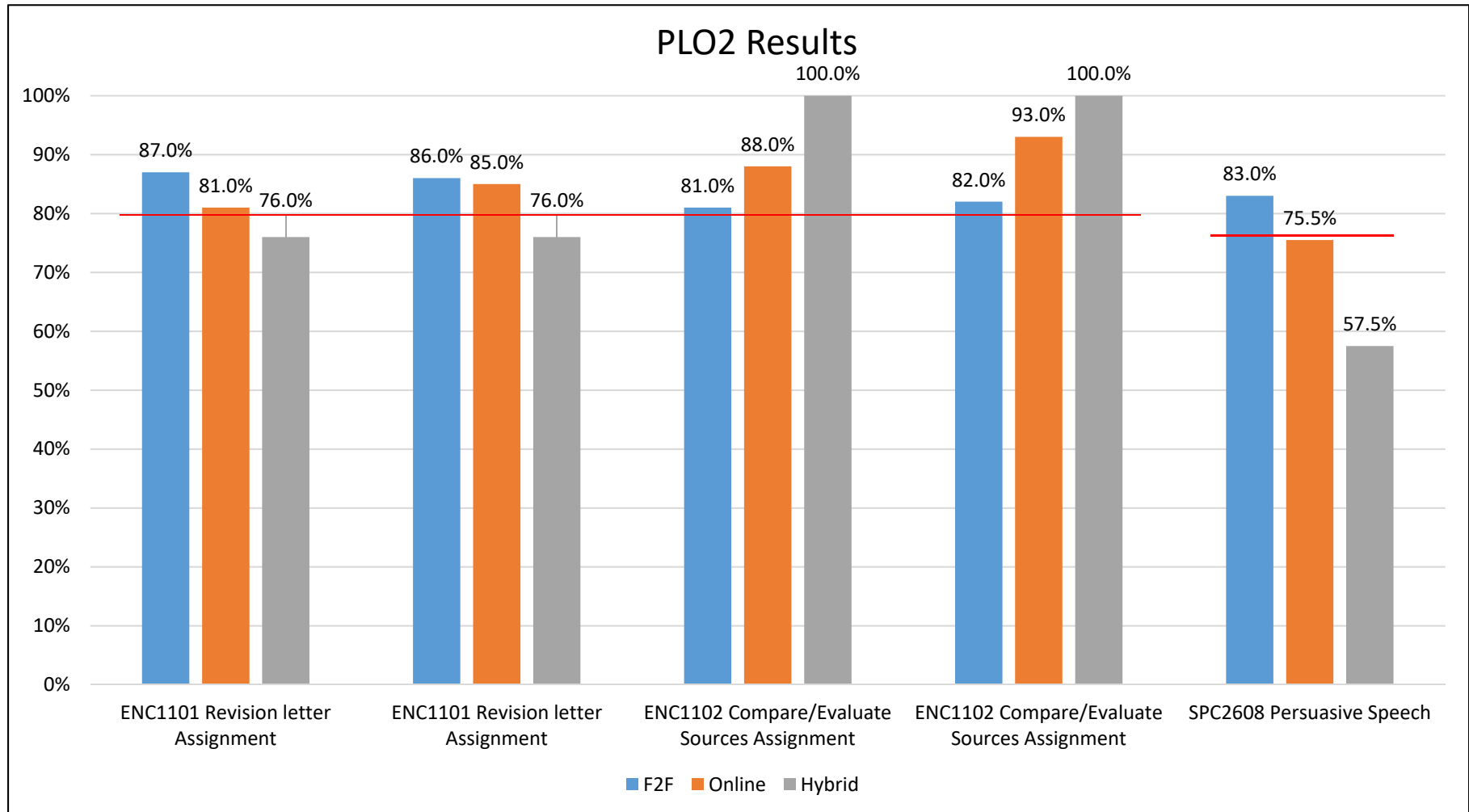


Critical/Creative Thinking.

Target: 70% of students will demonstrate competency by correctly answering questions on unit tests and a final exam or pre- and post-test (in cumulative final) in MAC1105, STA2023, and in BSC1010C.

70% of students will achieve a score of "pass" as defined by the assignment scoring rubric in LIT2000

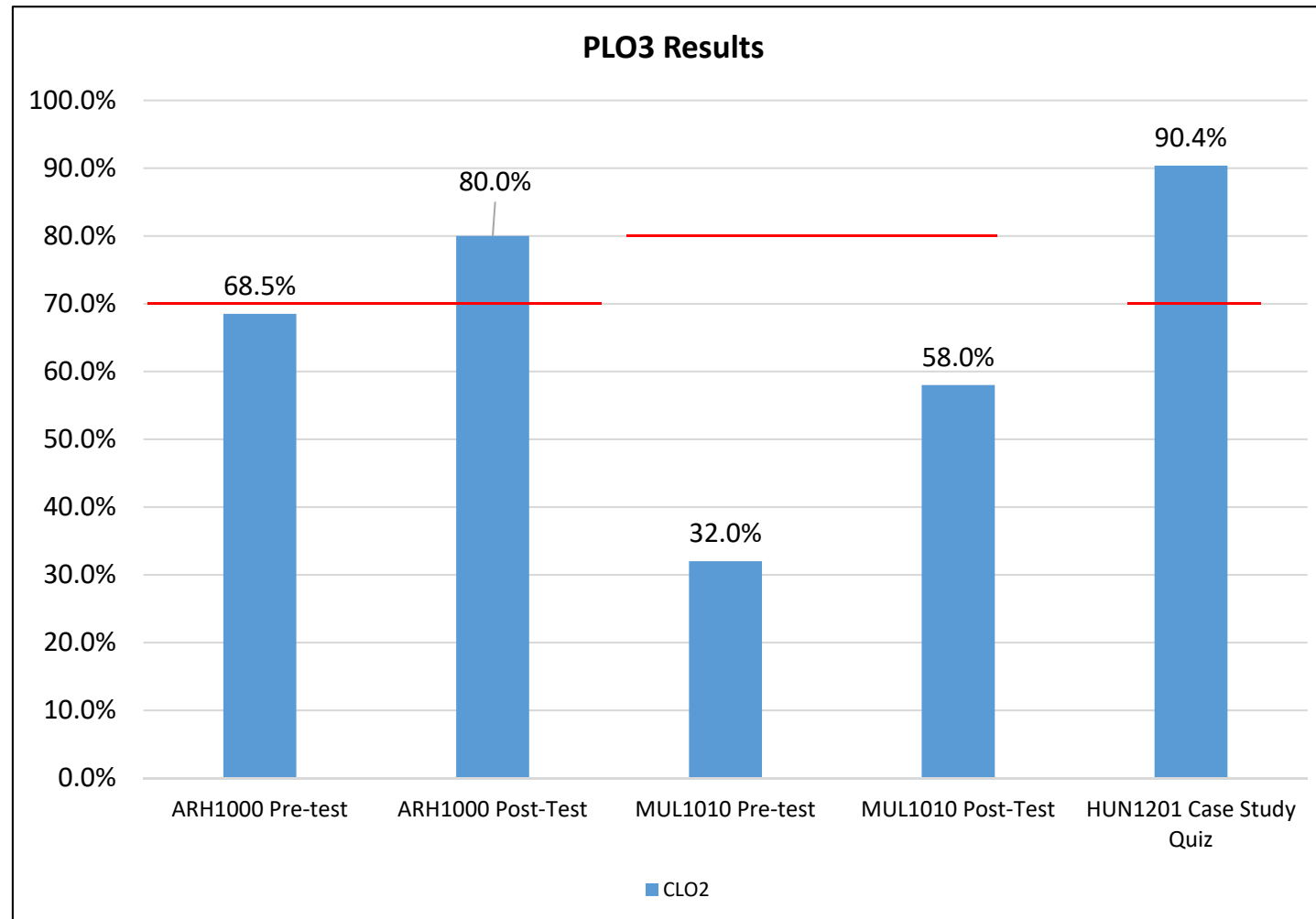
Assessment Results 2018-2019



Communication Skills

Target: 80% of students will score "Meets or Exceeds Expectations" for each of two rubric criteria: Revises Effectively and Reflects Meaningfully in ENC1101 and Attention to Rhetorical Characteristics of Sources and Source Management in ENC1102. 75% of students will achieve a grade of 70% or higher on persuasive speech assignment in SPC2608.

Assessment Results 2018-2019



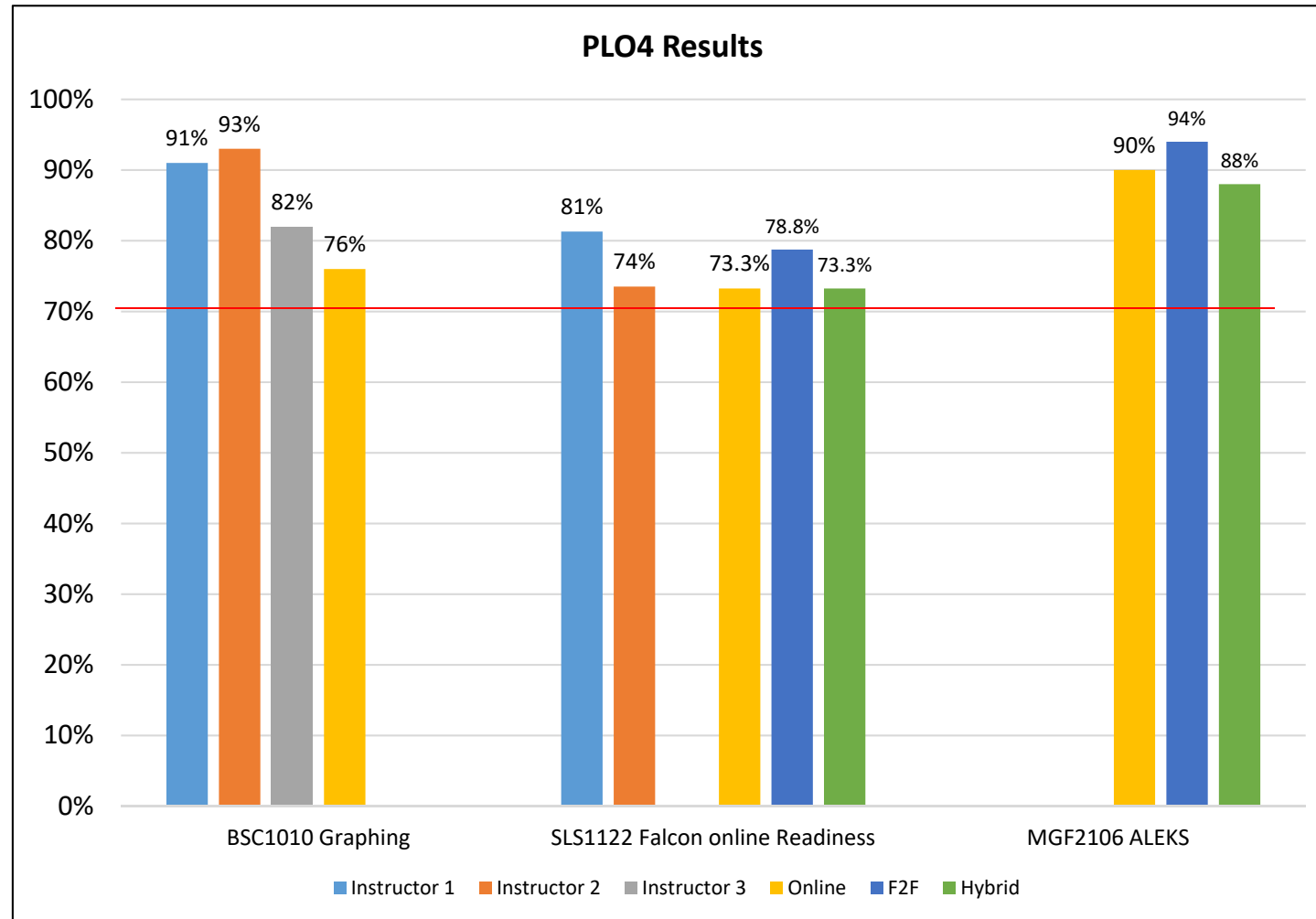
Cultural Literacy

Target: 70% or more of students will achieve 70% or higher on post-test in ARH1000.

80% or more of students will achieve 70% or higher on the post-test in MUL1010.

70% or more of students answer each question they are given correctly in HUN1201.

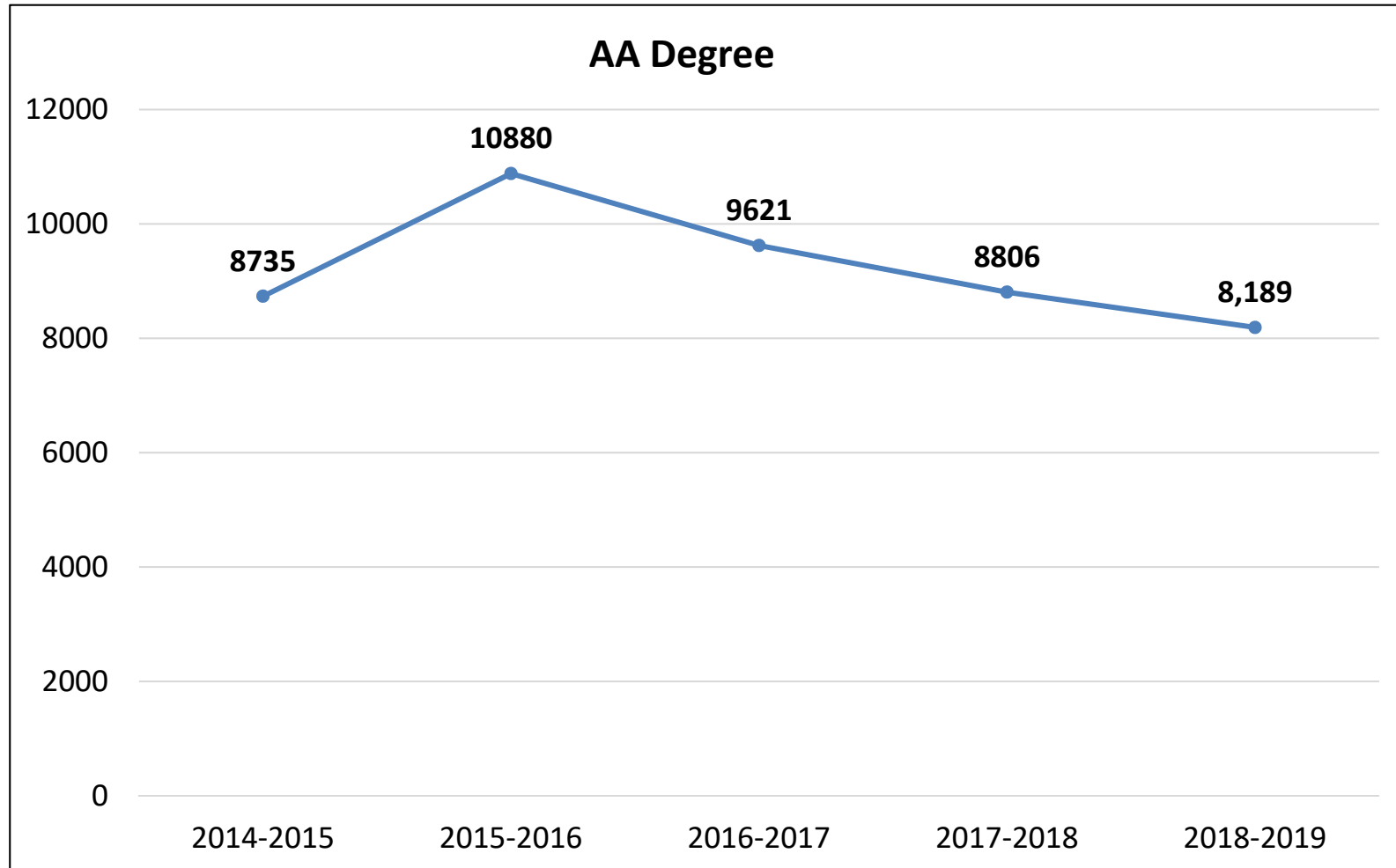
Assessment Results 2018-2019



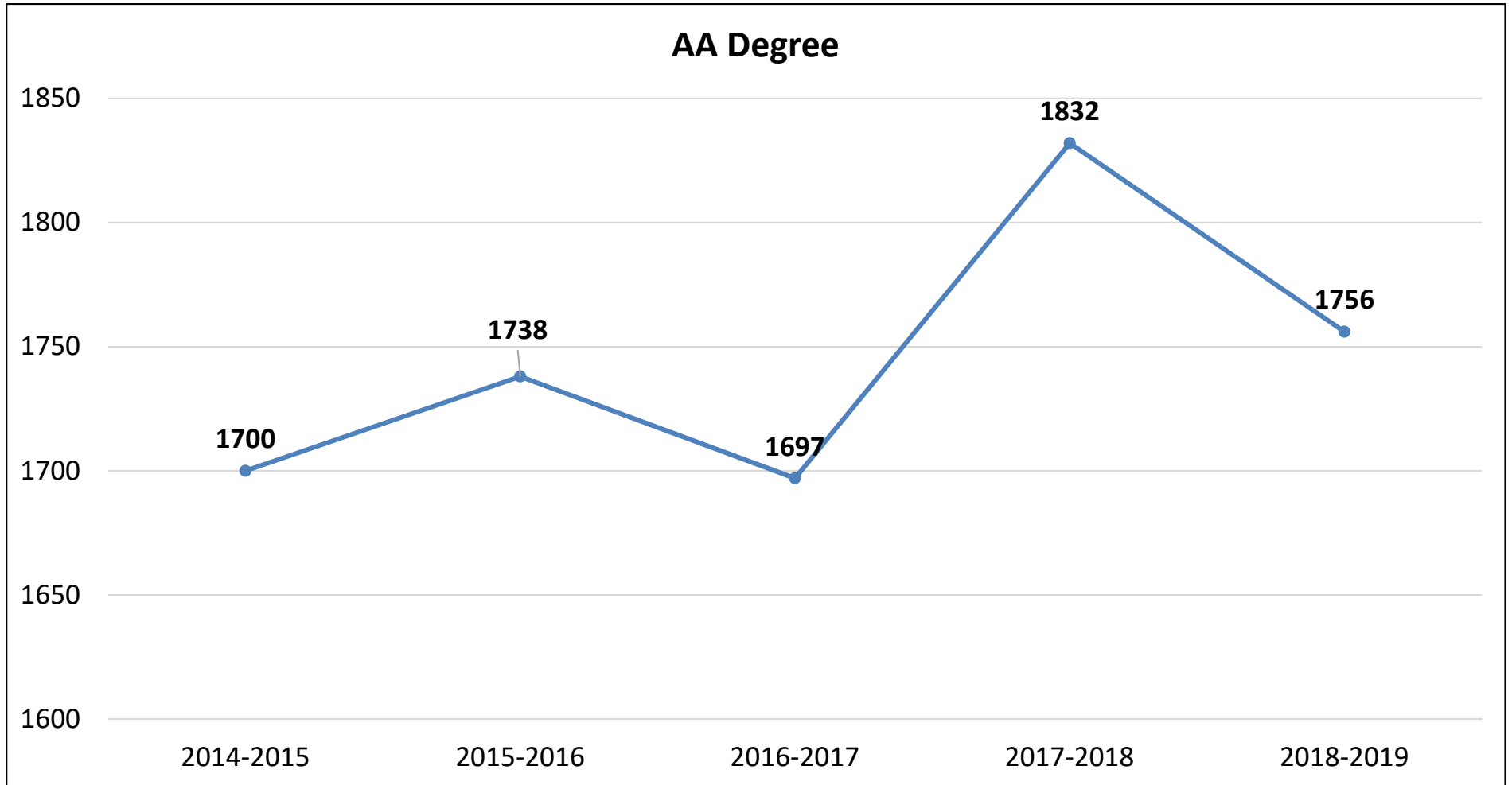
Technical and Informational Literacy

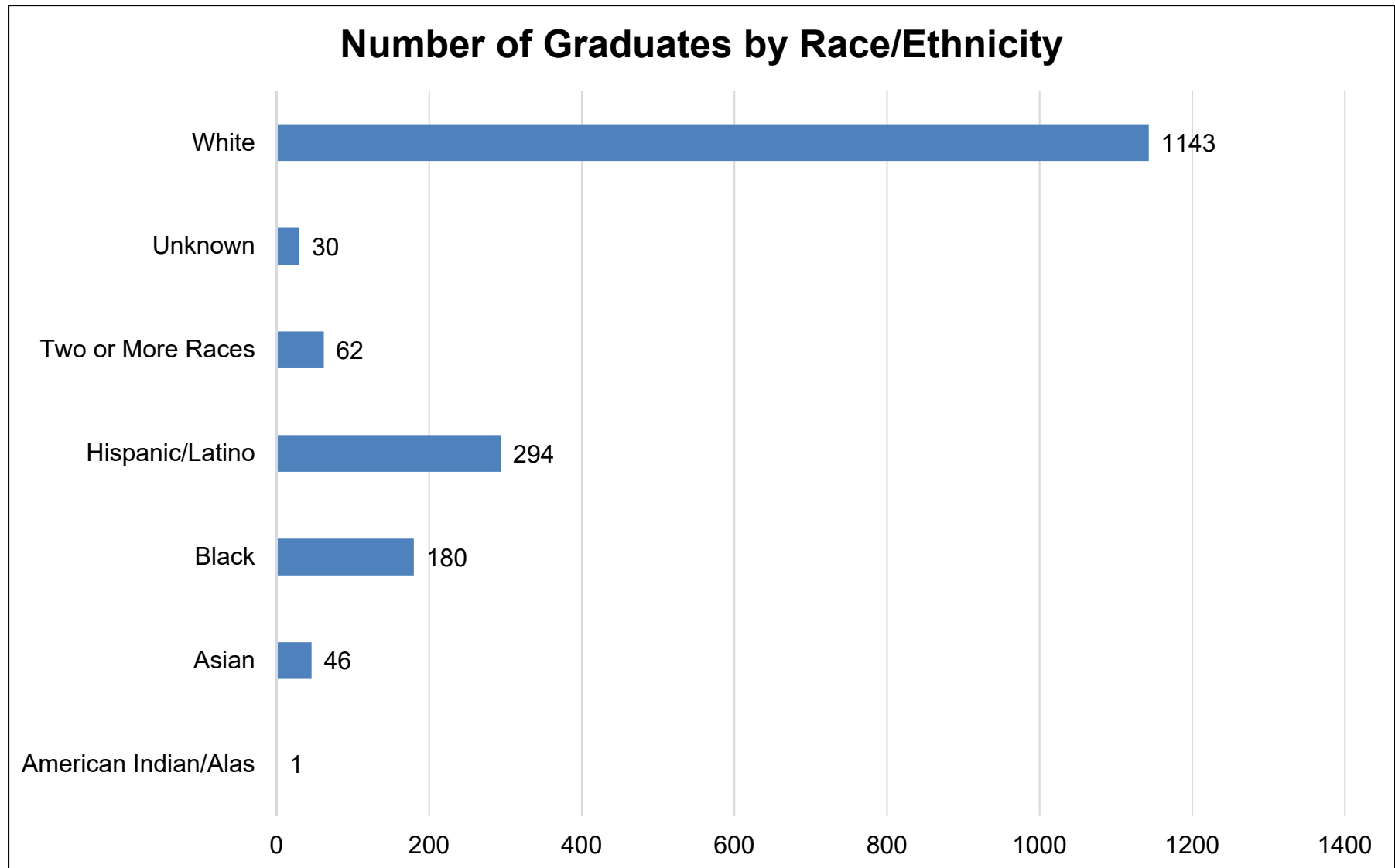
Target: 70% of students will achieve 70% or higher in all assessment measures

Headcount



Number of Graduates





Graduation Rates

Major	Fall Cohort Year	# in Cohort	150% Graduates	150% Graduation Rate	200% Graduates	200% Graduation Rate
AA Degree	2012	2,759	826	30%	953	35%
	2013	2,995	930	31%	1,045	35%
	2014	3,257	1,040	32%	1,171	36%
	2015 –200% in progress	3,436	1,098	32%	1,242	36%
	2016 – in progress	3,196	950	30%	950	30%

College average (150%- 58.3%, 200%- 66.1%)

Fall terms include prior Summer term enrollment in major.

0819 started in FA14.

1203 started in FA12 and has had no enrollment since.

2226 was 3504- AAS degree prior to FA11.

Graduation Rates by Race/Ethnicity

Major	Fall Cohort Year	Race/Ethnicity	# in Cohort	150% Graduates	150% Graduation Rate	200% Graduates	200% Graduation Rate
A.A	2014	American Indian/Alas	13	2	15.4%	2	15.4%
		Asian	67	24	35.8%	26	38.8%
		Black	461	111	24.1%	123	26.7%
		Hispanic/Latino	494	148	30.0%	169	34.2%
		Native Hawaiian/Paci	10	2	20.0%	2	20.0%
		Two or More Races	95	22	23.2%	31	32.6%
		Unknown	49	15	30.6%	17	34.7%
		White	2068	716	34.6%	801	38.7%
	2015 –200% in progress	American Indian/Alas	7	1	14.3%	1	14.3%
		Asian	78	34	43.6%	40	51.3%
		Black	516	126	24.4%	143	27.7%
		Hispanic/Latino	558	176	31.5%	201	36.0%
		Native Hawaiian/Paci	10	3	30.0%	4	40.0%
		Two or More Races	117	33	28.2%	38	32.5%
		Unknown	55	21	38.2%	23	41.8%
		White	2095	704	33.6%	792	37.8%
	2016 – in progress	American Indian/Alas	2	0	0.0%	0	0.0%
		Asian	57	21	36.8%	21	36.8%
		Black	498	88	17.7%	88	17.7%
		Hispanic/Latino	587	186	31.7%	186	31.7%
		Native Hawaiian/Paci	1	0	0.0%	0	0.0%
		Two or More Races	157	41	26.1%	41	26.1%
		Unknown	52	16	30.8%	16	30.8%
		White	1842	598	32.5%	598	32.5%

College average (150%- 58.3%, 200%- 66.1%)

Fall terms include prior Summer term enrollment in major.

0819 started in FA14.

1203 started in FA12 and has had no enrollment since.

2226 was 3504- AAS degree prior to FA11.

Source: IR Program Assessment Data

Graduation Rates by Gender

Major	Fall Cohort Year	Gender	# in Cohort	150% Graduates	150% Graduation Rate	200% Graduates	200% Graduation Rate
A.A	2014	Female	1848	664	36%	741	40%
		Male	1366	368	27%	417	31%
		PrefNoAns	8	3	38%	3	38%
		Unknown	35	5	14%	10	29%
	2015 –200% in progress	Female	2008	677	34%	765	38%
		Male	1400	413	30%	468	33%
		PrefNoAns	8	2	25%	3	38%
		Unknown	20	6	30%	6	30%
	2016 – in progress	Female	1928	608	32%	608	32%
		Male	1234	335	27%	335	27%
		PrefNoAns	3	2	67%	2	67%
		Unknown	31	5	16%	5	16%

College average (150%- 58.3%, 200%- 66.1%)

Fall terms include prior Summer term enrollment in major.

0819 started in FA14.

1203 started in FA12 and has had no enrollment since.

2226 was 3504- AAS degree prior to FA11.

Source: IR Program Assessment Data

Retention Rates

Program and Fall Cohort Year	Registered	Exclusions	Adjusted Cohort	Retained by DSC		Retained by Program		DSC Total Retained	
				N	%	N	%		
700000 – AA Degree	2013	3,742	632	3,110	168	5.4%	1,489	47.9%	53.3%
	2014	8,003	1,482	6,521	675	10.4%	3,707	56.8%	67.2%
	2015	8,081	1,490	6,591	722	11%	3,132	47.5%	58.5%
	2016	7,115	1,345	5,770	229	4%	2,972	51.5%	55.5%
	2017	6,562	1,417	5,145	126	2.4%	2,629	51.1%	53.5%

College average 67.1%

Registered - Includes all students enrolled in the fall term of the specified year, with the specified program as their primary major.

Exclusions - Includes students who are deceased or graduated fall of the specified year or the following spring or summer.

Not retained - Students who were not registered the following fall term.

Retained by DSC - Students who were still registered at DSC the following fall but with a different primary major.

Retained by Program - Students who were registered the following fall with the same primary major.

Source: IR Program Assessment Data

Fall 2017 to Fall 2018 Retention Rates By Race/Ethnicity

Race/ Ethnicity	Registered	Exclusions	Adjusted Cohort	Retained by DSC		Retained by Program		DSC Total Retained
				N	%	N	%	
Am. Ind	10	1	9	0	0.0%	3	33.3%	33.3%
Asian	152	41	111	0	0.0%	69	62.2%	62.2%
Black	919	149	770	16	2.1%	300	39.0%	41.0%
Hispanic	1170	236	934	21	2.2%	515	55.1%	57.4%
Native Hawaiian	7	2	5	0	0.0%	2	40.0%	40.0%
Two or More Races	288	50	238	11	4.6%	111	46.6%	51.3%
Unknown	88	24	64	0	0.0%	30	46.9%	46.9%
White	3928	914	3014	78	2.6%	1599	53.1%	55.6%

College average (African American: 49.9%, Hispanic: 66.3%)

Registered - Includes all students enrolled in the fall term of the specified year, with the specified program as their primary major.

Exclusions - Includes students who are deceased or graduated fall of the specified year or the following spring or summer.

Not retained - Students who were not registered the following fall term.

Retained by DSC - Students who were still registered at DSC the following fall but with a different primary major.

Retained by Program - Students who were registered the following fall with the same primary major.

Source: IR Program Assessment Data

Fall 2017 to Fall 2018 Retention Rates by Gender

Major	Fall Term	Registered	Exclusions	Adjusted Cohort	Retained by Program	
					N	%
700000 – AA Degree	Female	3,918	861	3,057*	1,604	52%
	Male	2,568	541	2,027*	1,018	50%
	PrefNoAns	20	2	18*	4	22%
	Unknown	56	13	43	3	7%

**some students retained by DSC*

Course Success Rates (1 of 5)

Courses	2015-2016		2016-2017		2017-2018		2018-2019	
	Attempted	% Successful	Attempted	% Successful	Attempted	% Successful	Attempted	% Successful
SBSS							11565	81%
AMH2010	588	71%	610	69%	533	77%	661	82%
AMH2020	928	75%	881	74%	698	81%	1279	81%
AMH2091	98	59%	61	62%	36	58%	88	56%
CPO2001	170	71%	248	76%	234	70%	183	84%
DEP2004	1,364	81%	1,477	82%	1755	83%	1495	86%
EUH2000	47	60%	71	63%	97	70%	100	82%
GEO2000	874	77%	987	79%	1050	82%	1018	84%
GEO2420	294	69%	315	71%	359	76%	306	76%
INR2002	203	86%	249	83%	216	81%	166	80%
PHI2010	225	84%	327	76%	586	77%	905	73%
POS2041	906	78%	830	82%	721	85%	1309	84%
PSY1012	3,393	75%	3,509	75%	3289	77%	2933	81%
SYG2000	744	69%	741	71%	719	75%	704	77%
SYG2010	75	69%	194	80%	212	86%	312	87%
WOH2012	32	63%	2	0%	62	69%	106	76%

- Indicates a success rate of 90% or higher
- Indicates a success rate between 70% and 89%
- Indicates a success rate below 70%

Course Success Rates (2 of 5)

Courses	2015-2016		2016-2017		2017-2018		2018-2019	
	Attempted	% Successful	Attempted	% Successful	Attempted	% Successful	Attempted	% Successful
SBUS							2414	79%
ECO2013	903	77%	922	76%	917	76%	1012	80%
ECO2023	683	84%	712	77%	708	80%	602	84%
GEB2351	127	69%	297	77%	326	81%	361	78%
GEB2430	715	82%	540	73%	448	71%	439	70%
SEDU							143	80%
EDF2085	277	83%	269	80%	232	75%	143	80%
SHCM							10866	79%
AML2060	183	74%	170	85%	56	75%	29	69%
AML2600	159	76%	160	81%	129	79%	113	82%
ENC1101	4,424	71%	4,305	74%	4223	73%	3931	75%
ENC1102	3,414	77%	3,493	77%	3308	79%	3171	80%
HUM2020	265	72%	292	75%	359	77%	419	83%
HUM2210	30	77%	30	57%	30	67%	34	76%
HUM2230			29	38%	28	96%	26	92%
LIT2000	444	76%	1676	80%	2471	82%	2568	81%
LIT2040	22	77%	34	85%	24	79%	20	80%
LIT2110	125	87%	286	78%	470	84%	453	75%
LIT2120	28	46%			12	92%	12	92%
REL2300	166	75%	146	71%	125	74%	90	71%



Course Success Rates (3 of 5)

Courses	2015-2016		2016-2017		2017-2018		2018-2019	
	Attempted	% Successful	Attempted	% Successful	Attempted	% Successful	Attempted	% Successful
SHEW							2,080	84%
HUN1201	2,075	81%	2,035	84%	2,064	82%	2,080	84%
SMAT							7186	73%
MAC1105	2,782	68%	2,461	69%	2389	72%	2513	70%
MAC2311C	257	69%	316	67%	287	71%	320	69%
MGF2106	2,401	77%	2,164	76%	1944	70%	1865	74%
MGF2107	496	76%	602	65%	574	66%	466	72%
STA2023	2,104	77%	2,113	75%	1,914	81%	2,022	76%
SMEA							2,867	79%
ARH1000	1,410	84%	1,455	82%	1335	81%	1554	81%
ARH2050	226	75%	225	70%	252	60%	250	72%
ARH2051	30	97%	32	78%	68	84%	55	73%
MUL1010	476	63%	492	62%	512	62%	433	82%
MUL2380	338	82%	223	78%	174	90%	180	89%
THE1000	307	75%	411	67%	400	61%	395	68%

- Indicates a success rate of 90% or higher
- Indicates a success rate between 70% and 89%
- Indicates a success rate below 70%

Course Success Rates (4 of 5)

Courses	2015-2016		2016-2017		2017-2018		2018-2019	
	Attempted	% Successful	Attempted	% Successful	Attempted	% Successful	Attempted	% Successful
SSCI							6896	77%
AST1002	717	81%	685	86%	683	78%	690	80%
BOT1010C	37	81%	40	90%	33	82%	33	88%
BSC1005	904	82%	1,241	77%	1213	77%	1192	78%
BSC1010C	612	73%	673	68%	679	70%	694	74%
BSC1020	763	73%	630	71%	516	70%	500	73%
BSC1085C	1,534	63%	1,514	63%	1475	66%	1496	69%
CHM1020	75	87%	129	87%	103	83%	99	84%
CHM1025C	811	86%	644	84%	497	86%	567	86%
CHM1045C	373	77%	450	73%	468	74%	419	76%
EVR2001	35	69%	165	69%	423	75%	480	75%
GLY2010C	14	93%	5	100%	9	78%	9	56%
MET2010	293	73%	251	79%	138	84%	86	80%
OCB2000C	48	77%	35	83%	25	92%	9	89%
OCE1001	120	87%	172	82%	114	87%	149	87%
PHY1020	48	73%	93	75%	45	82%	37	73%
PHY1053C	115	89%	79	84%	87	92%	92	87%
PHY2048C	110	89%	107	93%	91	90%	138	91%
PSC1121	655	91%	422	92%	245	88%	206	91%



Course Success Rates (5 of 5)

Courses	2015-2016		2016-2017		2017-2018		2018-2019	
	Attempted	% Successful	Attempted	% Successful	Attempted	% Successful	Attempted	% Successful
SSLS							3361	75%
SLS1122	3,451	77%	4,035	77%	4234	82%	3200	74%
SLS2281	42	83%	69	81%	150	91%	161	88%
SWLS							4290	80%
ASL2140	290	70%	354	71%	238	72%	331	73%
ASL2150	203	91%	189	89%	198	85%	185	88%
SPC2608	2,775	84%	2,798	84%	2742	83%	2961	83%
SPN1120	479	56%	470	60%	540	67%	510	67%
SPN1121	288	73%	316	71%	346	78%	303	79%
Grand Total							51,668	78%

Course Success Rates by Course and Race/Ethnicity

without High School Sections (1 of 9)

Course and Race/Ethnicity	2018-2019	
	Attempted	% Successful
SBSS	11565	81%
AMH2010	661	82%
American Indian/Alas	4	100%
Asian	17	82%
Black	59	73%
Hispanic/Latino	89	72%
Two or More Races	21	76%
Unknown	23	87%
White	448	85%
AMH2020	1279	81%
American Indian/Alas	2	100%
Asian	31	84%
Black	132	73%
Hispanic/Latino	202	78%
Native Hawaiian/Paci	1	100%
Two or More Races	47	74%
Unknown	38	84%
White	826	83%
AMH2091	88	56%
Black	50	48%
Hispanic/Latino	9	44%
Two or More Races	7	71%
Unknown	2	100%
White	20	70%
CPO2001	183	84%
Asian	5	100%
Black	17	71%
Hispanic/Latino	21	76%
Two or More Races	10	70%
Unknown	5	80%
White	125	87%

Course and Race/Ethnicity	2018-2019	
	Attempted	% Successful
SBSS	11565	81%
DEP2004	1495	86%
American Indian/Alas	3	100%
Asian	38	84%
Black	212	75%
Hispanic/Latino	267	91%
Native Hawaiian/Paci	2	0%
Two or More Races	61	84%
Unknown	30	97%
White	882	87%
EUH2000	100	82%
Asian	2	50%
Black	5	60%
Hispanic/Latino	12	100%
Two or More Races	5	60%
Unknown	2	100%
White	74	82%
GEO2000	1018	84%
American Indian/Alas	2	100%
Asian	21	76%
Black	111	67%
Hispanic/Latino	186	83%
Native Hawaiian/Paci	1	100%
Two or More Races	47	87%
Unknown	22	86%
White	628	87%
GEO2420	306	76%
Asian	7	57%
Black	34	74%
Hispanic/Latino	49	78%
Native Hawaiian/Paci	1	100%
Two or More Races	9	56%
Unknown	6	83%
White	200	78%

Course Success Rates by Course and Race/Ethnicity without High School Sections (2 of 9)

Course and Race/Ethnicity	2018-2019	
	Attempted	% Successful
SBSS	11565	81%
INR2002	166	80%
Asian	3	67%
Black	10	70%
Hispanic/Latino	28	75%
Two or More Races	9	78%
Unknown	7	86%
White	109	82%
PHI2010	905	73%
American Indian/Alas	2	0%
Asian	20	70%
Black	114	48%
Hispanic/Latino	143	77%
Two or More Races	43	60%
Unknown	20	75%
White	563	78%
POS2041	1309	84%
American Indian/Alas	4	100%
Asian	38	92%
Black	139	66%
Hispanic/Latino	213	83%
Two or More Races	55	84%
Unknown	35	91%
White	825	87%
PSY1012	2933	81%
American Indian/Alas	8	75%
Asian	73	92%
Black	427	70%
Hispanic/Latino	560	78%
Native Hawaiian/Paci	3	100%
Two or More Races	120	70%
Unknown	72	81%
White	1670	85%

Course and Race/Ethnicity	2018-2019	
	Attempted	% Successful
SBSS	11565	81%
SYG2000	704	77%
American Indian/Alas	3	100%
Asian	15	73%
Black	99	66%
Hispanic/Latino	109	79%
Native Hawaiian/Paci	3	100%
Two or More Races	37	65%
Unknown	15	93%
White	423	79%
SYG2010	312	87%
Asian	7	86%
Black	35	86%
Hispanic/Latino	45	80%
Two or More Races	14	86%
Unknown	6	83%
White	205	88%
WOH2012	106	76%
Asian	2	100%
Black	5	60%
Hispanic/Latino	11	73%
Two or More Races	3	67%
Unknown	8	75%
White	77	78%

Course Success Rates by Course and Race/Ethnicity without High School Sections (3 of 9)

Course and Race/Ethnicity	2018-2019	
	Attempted	% Successful
SBUS	2414	79%
ECO2013	1012	80%
American Indian/Alas	2	100%
Asian	33	88%
Black	96	64%
Hispanic/Latino	162	77%
Native Hawaiian/Paci	1	100%
Two or More Races	47	79%
Unknown	19	95%
White	652	82%
ECO2023	602	84%
Asian	10	90%
Black	78	72%
Hispanic/Latino	84	82%
Native Hawaiian/Paci	1	100%
Two or More Races	17	94%
Unknown	13	85%
White	399	86%
GEB2351	361	78%
American Indian/Alas	1	0%
Asian	13	77%
Black	55	76%
Hispanic/Latino	57	67%
Two or More Races	16	56%
Unknown	10	80%
White	209	84%

Course and Race/Ethnicity	2018-2019	
	Attempted	% Successful
SBUS	2414	79%
GEB2430	439	70%
Asian	8	75%
Black	77	58%
Hispanic/Latino	67	72%
Native Hawaiian/Paci	1	100%
Two or More Races	25	68%
Unknown	13	46%
White	248	75%
SEDU	143	80%
EDF2085	143	80%
American Indian/Alas	2	100%
Asian	1	100%
Black	17	76%
Hispanic/Latino	28	75%
Two or More Races	6	100%
Unknown	3	67%
White	86	80%
SHCM	10866	79%
AML2060	29	69%
Black	2	50%
Hispanic/Latino	6	50%
Unknown	3	100%
White	18	72%
AML2600	113	82%
Asian	3	67%
Black	54	76%
Hispanic/Latino	21	95%
Two or More Races	8	100%
Unknown	2	100%
White	25	80%

■ Indicates a success rate of 90% or higher
■ Indicates a success rate between 70% and 89%
■ Indicates a success rate below 70%

Source: IR Program Assessment Data

Course Success Rates by Course and Race/Ethnicity without High School Sections (4 of 9)

Course and Race/Ethnicity	2018-2019	
	Attempted	% Successful
SHCM	10866	79%
ENC1101	3931	75%
American Indian/Alas	8	75%
Asian	85	81%
Black	536	66%
Hispanic/Latino	716	71%
Native Hawaiian/Paci	7	86%
Two or More Races	167	66%
Unknown	95	86%
White	2317	79%
ENC1102	3171	80%
American Indian/Alas	8	88%
Asian	73	84%
Black	358	73%
Hispanic/Latino	573	77%
Native Hawaiian/Paci	4	75%
Two or More Races	115	80%
Unknown	95	83%
White	1945	82%
HUM2020	419	83%
Asian	11	91%
Black	50	66%
Hispanic/Latino	71	80%
Two or More Races	19	68%
Unknown	10	80%
White	258	88%
HUM2210	34	76%
Black	1	100%
Hispanic/Latino	12	58%
Two or More Races	1	100%
White	20	85%

Course and Race/Ethnicity	2018-2019	
	Attempted	% Successful
SHCM	10866	79%
HUM2230	26	92%
Hispanic/Latino	3	100%
Unknown	2	100%
White	21	90%
LIT2000	2568	81%
American Indian/Alas	6	83%
Asian	64	86%
Black	273	68%
Hispanic/Latino	446	79%
Native Hawaiian/Paci	2	100%
Two or More Races	110	76%
Unknown	52	87%
White	1615	84%
LIT2040	20	80%
Asian	1	100%
Black	1	0%
Hispanic/Latino	3	100%
Two or More Races	1	100%
White	14	79%
LIT2110	453	75%
American Indian/Alas	1	100%
Asian	11	82%
Black	51	53%
Hispanic/Latino	73	67%
Native Hawaiian/Paci	2	50%
Two or More Races	23	78%
Unknown	10	80%
White	282	80%
LIT2120	12	92%
Hispanic/Latino	2	50%
White	10	100%

Course Success Rates by Course and Race/Ethnicity

without High School Sections (5 of 9)

Course and Race/Ethnicity	2018-2019	
	Attempted	% Successful
SHCM	10866	79%
REL2300	90	71%
American Indian/Alas	1	100%
Asian	8	88%
Black	8	63%
Hispanic/Latino	11	73%
Two or More Races	8	63%
Unknown	1	0%
White	53	72%
SHEW	2080	84%
HUN1201	2080	84%
American Indian/Alas	4	100%
Asian	51	96%
Black	244	74%
Hispanic/Latino	344	84%
Two or More Races	85	81%
Unknown	52	77%
White	1300	86%
SMAT	7186	73%
MAC1105	2513	70%
American Indian/Alas	2	50%
Asian	62	73%
Black	278	56%
Hispanic/Latino	441	66%
Native Hawaiian/Paci	1	100%
Two or More Races	99	68%
Unknown	64	75%
White	1566	73%

Course and Race/Ethnicity	2018-2019	
	Attempted	% Successful
SMAT	7186	73%
MAC2311C	320	69%
Asian	16	81%
Black	24	63%
Hispanic/Latino	68	65%
Two or More Races	16	69%
Unknown	4	100%
White	192	69%
MGF2106	1865	74%
American Indian/Alas	1	0%
Asian	13	92%
Black	308	61%
Hispanic/Latino	382	72%
Native Hawaiian/Paci	3	100%
Two or More Races	79	67%
Unknown	29	76%
White	1050	80%
MGF2107	466	72%
American Indian/Alas	2	50%
Asian	2	100%
Black	82	67%
Hispanic/Latino	77	61%
Native Hawaiian/Paci	1	100%
Two or More Races	19	89%
Unknown	2	50%
White	281	75%
STA2023	2022	76%
American Indian/Alas	4	75%
Asian	60	78%
Black	217	69%
Hispanic/Latino	328	68%
Native Hawaiian/Paci	1	100%
Two or More Races	81	75%
Unknown	62	85%
White	1269	79%

■ Indicates a success rate of 90% or higher
■ Indicates a success rate between 70% and 89%
■ Indicates a success rate below 70%

Course Success Rates by Course and Race/Ethnicity without High School Sections (6 of 9)

Course and Race/Ethnicity	2018-2019	
	Attempted	% Successful
SMEA	2867	79%
ARH1000	1554	81%
American Indian/Alas	8	88%
Asian	37	86%
Black	191	74%
Hispanic/Latino	302	76%
Native Hawaiian/Paci	2	0%
Two or More Races	60	73%
Unknown	32	91%
White	922	85%
ARH2050	250	72%
Asian	7	100%
Black	21	62%
Hispanic/Latino	37	65%
Two or More Races	17	53%
Unknown	7	71%
White	161	76%
ARH2051	55	73%
Asian	1	100%
Black	3	33%
Hispanic/Latino	10	70%
Unknown	2	50%
White	39	77%
MUL1010	433	82%
American Indian/Alas	2	100%
Asian	15	100%
Black	61	70%
Hispanic/Latino	76	84%
Two or More Races	14	50%
Unknown	17	88%
White	248	85%

Course and Race/Ethnicity	2018-2019	
	Attempted	% Successful
SMEA	2867	79%
MUL2380	180	89%
Asian	3	100%
Black	29	90%
Hispanic/Latino	35	89%
Two or More Races	5	80%
Unknown	9	100%
White	99	88%
THE1000	395	68%
Asian	7	57%
Black	60	55%
Hispanic/Latino	69	62%
Native Hawaiian/Paci	1	0%
Two or More Races	12	75%
Unknown	13	46%
White	233	74%
SSCI	6896	77%
AST1002	690	80%
American Indian/Alas	1	0%
Asian	11	82%
Black	40	68%
Hispanic/Latino	113	83%
Native Hawaiian/Paci	1	0%
Two or More Races	20	75%
Unknown	14	100%
White	490	80%
BOT1010C	33	88%
Black	2	50%
Hispanic/Latino	1	100%
Native Hawaiian/Paci	1	100%
Two or More Races	1	100%
White	28	89%

Course Success Rates by Course and Race/Ethnicity without High School Sections (7 of 9)

Course and Race/Ethnicity	2018-2019	
	Attempted	% Successful
SSCI	6896	77%
BSC1005	1192	78%
American Indian/Alas	2	100%
Asian	21	81%
Black	141	67%
Hispanic/Latino	214	75%
Two or More Races	44	84%
Unknown	24	96%
White	746	80%
BSC1010C	694	74%
American Indian/Alas	1	100%
Asian	29	69%
Black	72	60%
Hispanic/Latino	111	70%
Native Hawaiian/Paci	1	0%
Two or More Races	31	77%
Unknown	6	100%
White	443	77%
BSC1020	500	73%
Asian	9	89%
Black	74	43%
Hispanic/Latino	92	74%
Native Hawaiian/Paci	1	0%
Two or More Races	21	76%
Unknown	5	60%
White	298	79%

Course and Race/Ethnicity	2018-2019	
	Attempted	% Successful
SSCI	6896	77%
BSC1085C	1496	69%
Asian	36	81%
Black	248	52%
Hispanic/Latino	323	69%
Native Hawaiian/Paci	1	100%
Two or More Races	62	61%
Unknown	30	63%
White	796	73%
CHM1020	99	84%
American Indian/Alas	1	0%
Black	8	75%
Hispanic/Latino	18	89%
Two or More Races	4	75%
Unknown	1	100%
White	67	85%
CHM1025C	567	86%
American Indian/Alas	2	100%
Asian	25	92%
Black	53	83%
Hispanic/Latino	98	83%
Native Hawaiian/Paci	1	0%
Two or More Races	23	87%
Unknown	14	100%
White	351	87%
CHM1045C	419	76%
Asian	15	80%
Black	28	64%
Hispanic/Latino	79	73%
Two or More Races	30	57%
Unknown	6	83%
White	261	80%

■ Indicates a success rate of 90% or higher
■ Indicates a success rate between 70% and 89%
■ Indicates a success rate below 70%

Source: IR Program Assessment Data

Course Success Rates by Course and Race/Ethnicity without High School Sections (8 of 9)

Course and Race/Ethnicity	2018-2019	
	Attempted	% Successful
SSCI	6896	77%
EVR2001	480	75%
Asian	4	75%
Black	63	54%
Hispanic/Latino	72	81%
Two or More Races	11	55%
Unknown	8	50%
White	322	80%
GLY2010C	9	56%
Hispanic/Latino	1	100%
Two or More Races	1	0%
Unknown	1	100%
White	6	50%
MET2010	86	80%
Asian	5	80%
Black	8	88%
Hispanic/Latino	8	75%
Native Hawaiian/Paci	1	100%
Two or More Races	3	67%
Unknown	1	100%
White	60	80%
OCB2000C	9	89%
Hispanic/Latino	1	100%
Two or More Races	1	100%
White	7	86%
OCE1001	149	87%
American Indian/Alas	1	0%
Black	5	80%
Hispanic/Latino	18	67%
Native Hawaiian/Paci	1	100%
Two or More Races	8	75%
Unknown	2	100%
White	114	91%

Course and Race/Ethnicity	2018-2019	
	Attempted	% Successful
SSCI	6896	77%
PHY1020	37	73%
Asian	2	100%
Black	2	100%
Hispanic/Latino	3	33%
Two or More Races	2	50%
White	28	75%
PHY1053C	92	87%
Asian	4	50%
Black	7	57%
Hispanic/Latino	23	91%
Two or More Races	5	100%
White	53	91%
PHY2048C	138	91%
Asian	4	100%
Black	10	80%
Hispanic/Latino	38	84%
Two or More Races	7	71%
Unknown	1	100%
White	78	96%
PSC1121	206	91%
Asian	6	83%
Black	37	97%
Hispanic/Latino	26	88%
Two or More Races	14	86%
Unknown	2	100%
White	121	91%

without High School Sections (9 of 9)

Course and Race/Ethnicity	2018-2019	
	Attempted	% Successful
SSLS	3361	75%
SLS1122	3200	74%
American Indian/Alas	5	80%
Asian	63	81%
Black	434	67%
Hispanic/Latino	565	74%
Native Hawaiian/Paci	2	50%
Two or More Races	133	66%
Unknown	83	77%
White	1915	76%
SLS2281	161	88%
American Indian/Alas	2	100%
Asian	4	100%
Black	22	86%
Hispanic/Latino	21	86%
Two or More Races	6	83%
Unknown	5	100%
White	101	87%
SWLS	4290	80%
ASL2140	331	73%
American Indian/Alas	2	50%
Asian	1	100%
Black	44	57%
Hispanic/Latino	23	78%
Native Hawaiian/Paci	2	50%
Two or More Races	15	67%
Unknown	7	86%
White	237	76%

Course and Race/Ethnicity	2018-2019	
	Attempted	% Successful
SWLS	4290	80%
ASL2150	185	88%
American Indian/Alas	1	100%
Asian	2	100%
Black	24	79%
Hispanic/Latino	8	100%
Two or More Races	9	89%
Unknown	6	100%
White	135	87%
SPC2608	2961	83%
American Indian/Alas	7	86%
Asian	77	96%
Black	328	76%
Hispanic/Latino	477	82%
Native Hawaiian/Paci	1	100%
Two or More Races	135	77%
Unknown	64	84%
White	1872	84%
SPN1120	510	67%
American Indian/Alas	3	67%
Asian	16	69%
Black	84	50%
Hispanic/Latino	52	71%
Two or More Races	17	71%
Unknown	15	87%
White	323	69%
SPN1121	303	79%
Asian	9	100%
Black	47	66%
Hispanic/Latino	27	78%
Two or More Races	11	91%
Unknown	10	80%
White	199	81%
Grand Total	51668	78%

Course Success Rates by Course and Race/Ethnicity High School Sections only

Course and Race/Ethnicity	2018-2019	
	Attempted	% Successful
SHCM	211	98%
ENC1101	111	95%
Black	6	100%
Hispanic/Latino	30	100%
Two or More Races	2	100%
Unknown	1	100%
White	72	93%
ENC1102	100	100%
Black	6	100%
Hispanic/Latino	27	100%
Two or More Races	2	100%
Unknown	1	100%
White	64	100%
SSLS	1038	90%
SLS1122	1038	90%
American Indian/Alas	6	83%
Asian	25	100%
Black	104	88%
Hispanic/Latino	171	84%
Native Hawaiian/Paci	1	100%
Two or More Races	31	84%
Unknown	37	89%
White	663	92%
Grand Total	1249	91%

Department Overall Success Rates by Race/Ethnicity (1 of 2)

Course and Race/Ethnicity	2018-2019	
	Attempted	% Successful
SBSS	11565	81%
American Indian/Alas	28	86%
Asian	279	84%
Black	1449	68%
Hispanic/Latino	1944	80%
Native Hawaiian/Paci	11	82%
Two or More Races	488	75%
Unknown	291	86%
White	7075	84%
SBUS	2414	79%
American Indian/Alas	3	67%
Asian	64	84%
Black	306	67%
Hispanic/Latino	370	75%
Native Hawaiian/Paci	3	100%
Two or More Races	105	75%
Unknown	55	78%
White	1508	82%
SEDU	143	80%
American Indian/Alas	2	100%
Asian	1	100%
Black	17	76%
Hispanic/Latino	28	75%
Two or More Races	6	100%
Unknown	3	67%
White	86	80%

Course and Race/Ethnicity	2018-2019	
	Attempted	% Successful
SHCM	10866	79%
American Indian/Alas	24	83%
Asian	256	84%
Black	1334	68%
Hispanic/Latino	1937	75%
Native Hawaiian/Paci	15	80%
Two or More Races	452	73%
Unknown	270	85%
White	6578	82%
SHEW	2080	84%
American Indian/Alas	4	100%
Asian	51	96%
Black	244	74%
Hispanic/Latino	344	84%
Two or More Races	85	81%
Unknown	52	77%
White	1300	86%
SMAT	7186	73%
American Indian/Alas	9	56%
Asian	153	78%
Black	909	62%
Hispanic/Latino	1296	68%
Native Hawaiian/Paci	6	100%
Two or More Races	294	71%
Unknown	161	80%
White	4358	76%

No High School Section included

Department Overall Success Rates by Race/Ethnicity (2 of 2)

Course and Race/Ethnicity	2018-2019	
	Attempted	% Successful
SMEA	2867	79%
American Indian/Alas	10	90%
Asian	70	89%
Black	365	70%
Hispanic/Latino	529	75%
Native Hawaiian/Paci	3	0%
Two or More Races	108	68%
Unknown	80	81%
White	1702	82%
SSCI	6896	77%
American Indian/Alas	8	63%
Asian	171	81%
Black	798	61%
Hispanic/Latino	1239	75%
Native Hawaiian/Paci	8	50%
Two or More Races	288	73%
Unknown	115	83%
White	4269	80%

Course and Race/Ethnicity	2018-2019	
	Attempted	% Successful
SSLS	3361	75%
American Indian/Alas	7	86%
Asian	67	82%
Black	456	68%
Hispanic/Latino	586	74%
Native Hawaiian/Paci	2	50%
Two or More Races	139	67%
Unknown	88	78%
White	2016	77%
SWLS	4290	80%
American Indian/Alas	13	77%
Asian	105	92%
Black	527	69%
Hispanic/Latino	587	81%
Native Hawaiian/Paci	3	67%
Two or More Races	187	77%
Unknown	102	85%
White	2766	81%
Grand Total	51668	78%

No High School Section included

Department Overall Success Rates by Race/Ethnicity for High School Sections only

Course and Race/Ethnicity	2018-2019	
	Attempted	% Successful
SHCM	211	98%
Black	12	100%
Hispanic/Latino	57	100%
Two or More Races	4	100%
Unknown	2	100%
White	136	96%
SSLS	1038	90%
American Indian/Alas	6	83%
Asian	25	100%
Black	104	88%
Hispanic/Latino	171	84%
Native Hawaiian/Paci	1	100%
Two or More Races	31	84%
Unknown	37	89%
White	663	92%
Grand Total	1249	91%

Major and Institution	2017-2018 Count	2018-2019 Count
Accounting	94	101
Florida Atlantic University	2	4
Florida Gulf Coast University	1	1
Florida State University		1
University of Central Florida	79	86
University of Florida	4	2
University of North Florida	7	6
University of South Florida	1	1
Actuarial Science	5	4
Florida State University	3	1
University of Central Florida	2	3
Advertising & Public Relations	13	11
University of Central Florida	13	11
Aeronautics/Aviation/Aerospace	1	2
Polk State College	1	2
Aerospace Engineering	39	35
University of Central Florida	33	31
University of Florida	6	4
Agricultural Education & Comm	4	3
University of Florida	4	3
Agricultural Operations Mgmt	3	1
University of Florida	3	1
Agricultural Science	3	1
Florida Agricultural and Mechanical University	3	1
Animal Sciences	27	38
University of Florida	27	38
Anthropology	12	15
University of Central Florida	11	13
University of Florida		1
University of South Florida	1	1

Major and Institution	2017-2018 Count	2018-2019 Count
Anthropology/Sociology		1
Florida International University		1
Applied Phys & Kinesiology	2	2
University of Florida	2	2
Architecture	31	25
Florida Agricultural and Mechanical University	1	1
Florida Atlantic University	1	
University of Central Florida	26	22
University of Florida	3	2
Art	4	6
University of Florida	2	1
University of North Florida	2	4
University or West Florida		1
Art - BA	23	30
University of Central Florida	23	30
Art - BFA	39	25
University of Central Florida	39	25
Art Education	6	3
University of Central Florida	5	3
University of North Florida	1	
Art History	2	2
Florida State University	1	1
University of Central Florida	1	1
ASL/English Interpreting	14	6
University of North Florida	14	6
Astronomy	2	2
University of Florida	2	2
Athletic Training	44	21
Florida Gulf Coast University	2	
University of Central Florida	30	15
University of Florida	2	4
University of North Florida	7	1
University of South Florida	2	
University of West Florida	1	1

Major and Institution	2017-2018 Count	2018-2019 Count
Athletic Training		21
University of Central Florida		15
University of Florida		4
University of North Florida		1
University of West Florida		1
Bac. Not a Florida Public Inst	834	793
Bac. Not a Florida Public Institution	834	793
BAS in Computer & Info & Tech		1
Eastern Florida State College		1
BAS in Supervision & Mgmt	683	578
Chipola College	2	3
Daytona State College		576
Behavioral Healthcare (BAS)	2	1
University of South Florida	2	1
Biochemistry		1
Florida State University		1
Bio-Chemistry	1	1
Florida Gulf Coast University	1	1
Biochemistry & Molecular Biol	8	8
University of Florida	8	8
Biological Sci- Pre-Profession	16	9
Florida State University	16	9
Biological Science - BA	2	6
Florida Atlantic University	2	6
Biology	224	183
Florida Agricultural & Meh. Univ.	3	1
Florida Gulf Coast University	1	2
Florida International University	3	
Florida State University	8	8
University of Central Florida	149	121
University of Florida	46	38
University of North Florida	14	13

Major and Institution	2017-2018 Count	2018-2019 Count
Biomedical Engineering	5	2
University of Florida	5	2
Biomedical Sciences	140	89
University of Central Florida	125	76
University of North Florida	3	2
University of South Florida	12	11
Biotechnology	4	2
University of Central Florida	4	2
Botany	5	3
University of Florida	5	3
BS - Info Systems Technology	103	80
Daytona State College	103	80
BS Nursing - RN-BSN	1568	1591
Daytona State College	1568	1591
BSED Elementary Education	345	328
Daytona State College	345	328
BSED Exceptional Education	54	42
Daytona State College	54	42
BSED Secondary Biology Education	15	7
Daytona State College	15	7
BSED Secondary Earth/Space Sci	11	15
Daytona State College	11	15
BSED Secondary Math Education	27	24
Daytona State College	27	24
BSET Engineering Technology	54	49
Daytona State College	54	49
Building Construction	4	5
University of North Florida	4	5

Intended Major (3 of 10)

Major and Institution	2017-2018 Count	2018-2019 Count
Business Admin BABA	47	31
University of Florida	47	31
Business Administration	26	20
Florida Agricultural and Mechanical University	4	3
Florida International University	5	2
Florida State University	17	15
Business Administration (BS)	1	2
Florida State College at Jacksonville	1	2
Business Econ	128	111
University of Central Florida	128	111
Business Mgmt	19	11
University of North Florida	19	11
Business, General	12	11
University of West Florida	12	11
Chemical Engineering	8	4
Florida State University	1	
University of Florida	6	4
University of South Florida	1	
Chemistry	28	28
Florida Agricultural and Mechanical University	2	2
Florida State University	3	1
University of Central Florida	18	19
University of Florida	4	4
University of South Florida	1	2
Civil Engineering	53	44
Florida State University	4	3
University of Central Florida	37	35
University of Florida	6	4
University of North Florida	4	1
University of South Florida	2	1

Major and Institution	2017-2018 Count	2018-2019 Count
Clinical Laboratory Science (B)	1	1
Santa Fe College	1	1
Comm	5	1
University of South Florida	5	1
Comm - Culture & Media	1	1
University of South Florida	1	1
Comm & Media Studies(includes)	7	4
Florida State University	7	4
Comm Sci & Disorders	25	20
University of Central Florida	25	20
Communication	1	1
Florida International University	1	1
Communications	6	6
Florida Atlantic University	1	1
University of Florida		2
University of North Florida	5	3
Communications: Journalism	1	1
University of North Florida	1	1
Computer & Info Science	6	4
University of North Florida	6	4
Computer Engineering	45	40
University of Central Florida	42	37
University of Florida	3	2
University of South Florida		1
Computer Science	144	114
Florida State University	8	3
University of Central Florida	125	95
University of Florida	9	12
University of South Florida	2	4

Intended Major (4 of 10)

Major and Institution	2017-2018 Count	2018-2019 Count
Construction (BS)	1	2
Seminole State College of Florida	1	2
Construction Engineering	6	4
University of Central Florida	6	4
Construction Mgmt	7	4
Florida International University		1
University of Florida	7	3
Criminal Justice	198	186
Florida Agricultural and Mechanical University	4	3
Florida Atlantic University	3	2
Florida Gulf Coast University	1	1
Florida International University	1	2
University of Central Florida	182	173
University of North Florida	7	5
Criminal Justice (BAS)	1	2
University of South Florida	1	2
Criminology	13	7
Florida State University	11	7
University of South Florida	2	
Criminology & Law	4	9
University of Florida	4	9
Dance	2	1
University of Florida	2	1
Deaf Studies (BAS)	2	1
University of South Florida	2	1
Dental Hygiene - BAS	3	8
St. Petersburg College	3	8
Dietetics	6	7
University of Florida	6	7

Major and Institution	2017-2018 Count	2018-2019 Count
Digital Arts	1	3
University of Florida	1	3
Digital Media	59	66
University of Central Florida	59	66
Digital Media Studies		1
Florida International University		1
Drama & Theater Arts		1
Florida Agricultural and Mechanical University		1
DSC BSET EET Prereqs	9	12
Daytona State College	9	12
DSC Secondary Physics Educ.		2
Daytona State College		2
Early Childhood Education	17	14
Chipola College	2	1
University of Central Florida	14	1
University of Florida	1	12
East Asian Lang, Lit, & Ling	2	2
University of Florida	2	2
Economics	2	3
Florida Atlantic University	1	1
University of South Florida	1	2
Economics - BS	14	10
University of Central Florida	14	10
Economics, BA	1	1
University of North Florida	1	1
Educational Studies - Pre-Scho		1
St. Petersburg College		1
Electrical Engineering	42	35
Florida State University	2	2
University of Central Florida	38	32
University of North Florida	2	1
Electrical Engineering (EE)	1	2
University of Florida	1	2

Intended Major (5 of 10)

Major and Institution	2017-2018 Count	2018-2019 Count
Elementary Education	47	50
Florida Agricultural & Mech. Uni.	1	1
Florida Atlantic University		1
Florida State University		3
University of Central Florida	37	33
University of Florida	1	1
University of North Florida	4	7
University of South Florida	3	3
University of West Florida	1	1
Elementary Education - (B.S.)	1	1
Chipola College	1	1
English	55	61
Florida International University		1
University of Central Florida	48	55
University of Florida	4	3
University of North Florida	1	
University of South Florida	2	2
English Lang & Lit & Creative	3	3
Florida State University	3	3
English Language Arts Educ	18	18
University of Central Florida	18	18
Entertainment Management	2	4
University of Central Florida	2	4
Entomology & Nematology	1	2
University of Florida	1	2
Environmental Engineering	12	13
University of Central Florida	12	12
University of Florida		1

Major and Institution	2017-2018 Count	2018-2019 Count
Environmental Sci & Policy	1	1
University of South Florida	1	1
Environmental Science	11	13
Florida State University	3	2
University of Florida	8	11
Environmental Studies	17	22
Florida Gulf Coast University	1	1
University of Central Florida	16	21
Event Mgmt	12	11
University of Central Florida	12	11
Exceptional Education	3	6
University of Central Florida	2	6
University of Florida	1	
Exercise Sci & Health Promotio	1	2
Florida Atlantic University	1	2
Exercise Science	4	2
Florida State University	4	2
Family, Youth & Community Sci	1	1
University of Florida	1	1
Film	25	23
University of Central Florida	25	23
Finance	64	59
Florida Atlantic University	1	2
Florida Gulf Coast University	1	
Florida International University	2	
Florida State University	2	2
University of Central Florida	43	46
University of Florida	9	7
University of North Florida	2	1
University of South Florida	4	1

Intended Major (6 of 10)

Major and Institution	2017-2018 Count	2018-2019 Count
Food & Nutrition Science		1
Florida State University		1
Forensic Studies	1	40
Florida Gulf Coast University	1	40
Forest Resource Conservation	4	2
University of Florida	4	2
French	1	1
University of Central Florida	1	1
General Studies	82	65
University of South Florida	82	65
Geomatics	2	1
University of Florida	2	1
Graphic Design	4	4
University of Florida	4	4
Health Administration		2
Florida Atlantic University		1
University of North Florida		1
Health Education & Behavior	1	2
University of Florida	1	2
Health Info Mgmt	9	9
Florida Agricultural and Mechanical University	1	2
University of Central Florida	8	7

Major and Institution	2017-2018 Count	2018-2019 Count
Health Science	4	2
Florida Agricultural and Mechanical University	3	2
Florida Gulf Coast University	1	
Health Science - Exercise Sci	5	8
University of North Florida	5	8
Health Science - Public Health	3	3
University of North Florida	3	3
Health Science/Pharmacy	31	20
University of Florida	31	20
Health Sciences	6	4
University of South Florida	6	4
Health Sciences - Pre-Clinical	259	233
University of Central Florida	259	233
Health Services Admin	36	34
University of Central Florida	36	34
History	43	33
Florida Atlantic University	1	
Florida State University	1	2
University of Central Florida	35	28
University of Florida	1	1
University of North Florida	3	2
University of South Florida	2	3
Horticultural Studies	4	3
University of Florida	4	3
Hospitality Mgmt	38	27
Florida State University	2	1
University of Central Florida	36	26

Intended Major (7 of 10)

44

Major and Institution	2017-2018 Count	2018-2019 Count
Human Communication	10	7
University of Central Florida	10	7
Human Resource Mgmt		1
Florida International University		1
Human Services		1
Florida State College at Jacksonville		1
Humanities & Cultural Studies	5	3
University of Central Florida	5	3
Industrial Engineering	5	9
Florida State University		1
University of Central Florida	4	7
University of South Florida	1	1
Info Systems		2
University of Florida		2
Info Technology	29	34
University of Central Florida	26	33
University of South Florida	1	1
Integrated Business	218	167
University of Central Florida	218	167
Interdisciplinary Social Sci	1	2
University of South Florida	1	2
Interdisciplinary Studies	45	34
Florida International University	1	1
University of Central Florida	42	33
Interior Design	3	5
Florida State University	3	2
University of Florida		3
Interior Design (BAS)	1	2
Seminole State College of FL	1	2
International & Global Studies	10	9
University of Central Florida	10	9
International Business	6	4
Florida Atlantic University	2	1
Florida International University	1	2
University of North Florida	2	1

Major and Institution	2017-2018 Count	2018-2019 Count
International Relations	1	1
Florida International University	1	1
Journalism	29	27
Florida Agricultural and Mechanical University	1	2
University of Central Florida	24	22
University of Florida	4	3
Legal Studies	37	38
University of Central Florida	36	1
University of West Florida	1	37
Liberal Studies		1
Florida International University		1
Linguistics	3	1
University of Florida	3	1
Marine Biology	24	23
Florida International University	1	3
University of South Florida	17	15
University of West Florida	6	5
Marine Science	15	14
Florida Gulf Coast University	5	3
University of Florida	10	11
Marketing	89	78
Florida Atlantic University	1	2
Florida Gulf Coast University	1	2
Florida International University	3	1
Florida State University	3	4
University of Central Florida	70	61
University of Florida	1	2
University of North Florida	5	5
University of South Florida	5	1
Mass Comm - News, Jour, Public	3	1
University of South Florida	3	1
Materials Science & Eng	1	1
University of Florida	1	1

Intended Major (8 of 10)

Major and Institution	2017-2018 Count	2018-2019 Count
Mathematics	4	10
University of Central Florida	3	7
University of Florida	1	3
Mathematics Education	3	2
University of Central Florida	3	2
Mechanical Engineering	97	81
Florida Atlantic University	2	2
Florida International University	1	1
Florida State University	3	1
University of Central Florida	79	66
University of Florida	7	5
University of North Florida	5	6
Medical Laboratory Sciences	7	4
University of Central Florida	7	4
Meteorology	3	2
Florida State University	3	2
Mgmt	89	95
Florida Atlantic University	4	7
Florida State University	4	4
University of Central Florida	73	75
University of Florida	5	6
University of South Florida	3	3
Mgmt Info Systems	1	1
University of South Florida	1	1
Microbiology	1	1
University of South Florida	1	1
Microbiology & Cell Science	1	2
University of Florida	1	2

Major and Institution	2017-2018 Count	2018-2019 Count
Multimedia Studies	2	2
Florida Atlantic University	2	2
Music	31	21
University of Central Florida	27	19
University of North Florida	4	2
Music (all tracks)	3	6
Florida State University	3	6
Music Education	10	16
University of Central Florida	9	14
University of North Florida	1	2
Music Performance	2	2
University of South Florida	2	2
Music Therapy	2	2
Florida State University	2	2
Natural Resource Conservation		1
University of Florida		1
Non-Profit Management	1	2
University of Central Florida	1	2
Nuclear Engineering	2	1
University of Florida	2	1
Nursing	224	183
Broward College	2	2
Florida Agricultural and Mechanical University		2
Florida International University	1	1
Florida State University		4
University of Central Florida	184	146
University of Florida	19	18
University of North Florida	10	6
University of South Florida	3	4
University of West Florida	1	

Intended Major (9 of 10)

Major and Institution	2017-2018 Count	2018-2019 Count
Nursing (B.S.N)		1
Santa Fe College		1
Nurtritional Sciences	2	1
University of Florida	2	1
Nutrition & Dietetics	24	15
University of North Florida	24	15
Ocean Engineering	2	2
Florida Atlantic University	2	2
Palmer Chiropractic Pre-reqs	2	3
Palmer College of Chiropractic	2	3
Paralegal Studies (BAS)	1	1
St. Petersburg College	1	1
Philosophy	8	6
Florida State University	1	
University of Central Florida	6	6
University of Florida	1	
Photography	11	8
University of Central Florida	11	8
Physical Education	2	2
Florida Agricultural and Mechanical University	1	1
University of South Florida	1	1
Physics	19	15
Florida State University	1	11
University of Central Florida	16	2
University of Florida	1	1
University of South Florida	1	1
Political Science	54	52
Florida Agricultural & Mech. University		2
Florida International University		2
Florida State University	6	5
University of Central Florida	38	32
University of Florida	9	8
University of North Florida		1
University of South Florida		2

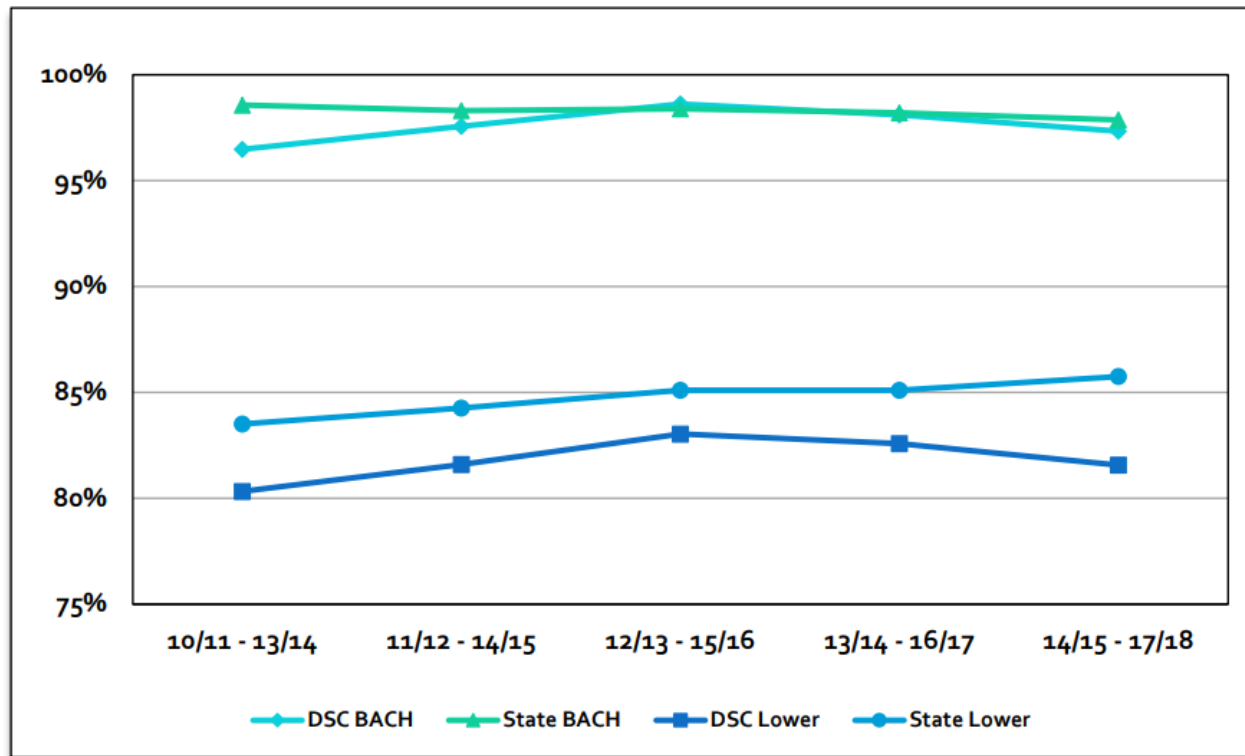
Major and Institution	2017-2018 Count	2018-2019 Count
Psychology	392	357
Florida Agricultural and Mechanical University	5	5
Florida Atlantic University	1	1
Florida International University	1	3
Florida State University	11	6
University of Central Florida	353	317
University of Florida	5	9
University of North Florida	8	11
University of South Florida	7	5
University of West Florida	1	
Public Administration	10	4
University of Central Florida	10	4
Public Health	1	2
University of South Florida	1	2
Public Relations	4	4
University of Florida	4	4
Radiological & Imaging Sci	10	7
Valencia College	10	7
Radio-Television	25	19
University of Central Florida	25	19
Real Estate	4	3
University of Central Florida	4	3
Religion & Cultural Studies	7	4
University of Central Florida	7	4
Resort & Hospitality Mgmt		1
Florida Gulf Coast University		1
Restaurant & Foodservice Mgmt	1	1
University of Central Florida	1	1
Retail Merchandising &Product Dev	4	2
Florida State University	4	2

Major and Institution	2017-2018 Count	2018-2019 Count
RN-BSN	9	3
Chipola College	9	3
Science Education - Biology	4	6
University of Central Florida	4	6
Science Education - Chemistry		4
University of Central Florida		4
Science, Interdisciplinary	2	1
University of West Florida	2	1
Social Science Education	17	14
Florida State University	2	
University of Central Florida	15	14
Social Sciences	7	7
University of Central Florida	7	7
Social Studies Education	2	1
University of North Florida	2	1
Social Work	106	101
Florida Agricultural and Mechanical University	2	
Florida Atlantic University		1
University of Central Florida	97	99
University of North Florida	2	
University of South Florida	5	1
Sociology	22	15
University of Central Florida	20	13
University of Florida	2	2
Spanish	4	3
University of Central Florida	4	3
Sport Mgmt	7	13
Florida State University	5	5
University of Florida		3
University of North Florida	2	5
Sports & Exercise Science	69	50
University of Central Florida	69	50
Sustainability & the Build Env		1
University of Florida		1

Major and Institution	2017-2018 Count	2018-2019 Count
Tech Educ & Industry Training		3
University of Central Florida		3
Telecommunication	1	1
University of Florida	1	1
Theatre	43	50
University of Central Florida	38	45
University of Florida	1	2
University of South Florida	1	
University of West Florida	3	3
Theatre/Motion Picture Art	2	1
Florida State University	2	1
UCF Communication and Conflict	4	3
University of Central Florida	4	3
UF Comm and Science Disorder	3	2
University of Florida	3	2
Undecided Major - Sub Plan	934	702
Undecided	934	702
Veterinary Technology (BAS)	52	48
St. Petersburg College	52	48
Wildlife Ecology & Conservation	2	3
University of Florida	2	3
World Language Education	2	3
University of Central Florida	2	3
Writing & Rhetoric	12	9
University of Central Florida	12	9
Zoology	14	18
University of Florida	14	18
Grand Total	9240	8251

AA FL State Accountability Measure – Success Rates

Tracking Period	AA		AS/AAS		PSVC/ATD		Bach	
	DSC	State	DSC	State	DSC	State	DSC	State
10/11 – 13/14	81.2%	84.2%	76.8%	78.6%	83.3%	89.3%	96.5%	98.6%
11/12 – 14/15	81.1%	84.8%	82.6%	79.4%	86.8%	91.1%	97.6%	98.3%
12/13 – 15/16	83.5%	85.7%	80.9%	79.6%	83.0%	91.4%	98.6%	98.4%
13/14 – 16/17	82.2%	85.5%	82.9%	80.1%	87.8%	92.0%	98.1%	98.2%
14/15 – 17/18	81.2%	86.0%	81.6%	82.3%	87.9%	91.8%	97.3%	97.9%

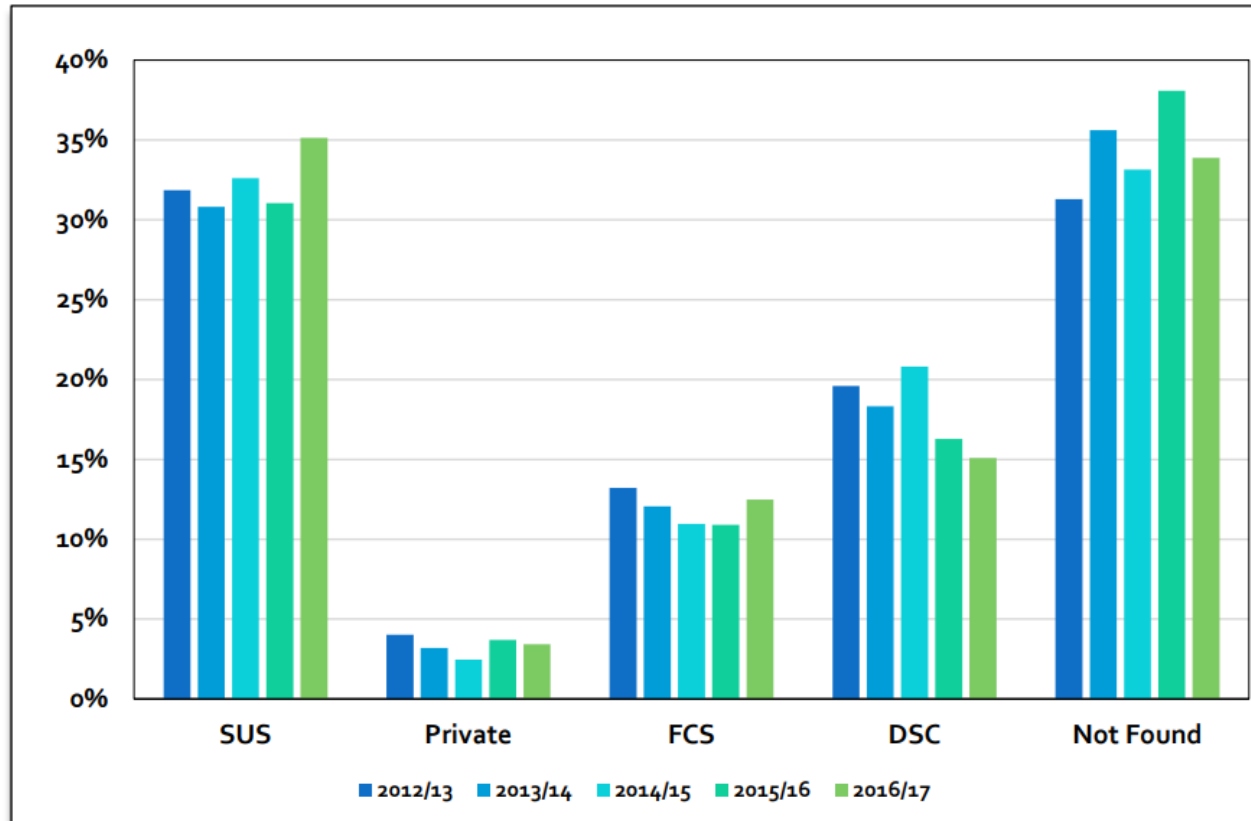


Success captures status of FTIC students who graduated, are still enrolled in good standing ($GPA \geq 2.0$), or left in good standing measured after 4 years for AA/AS/AAS (who completed at least 18 college-level credits), after 2 years for PSVC/ATD (who completed at least 9 college-level credits), and after 4 years for first time BAS/BS students.

Source: M1P2

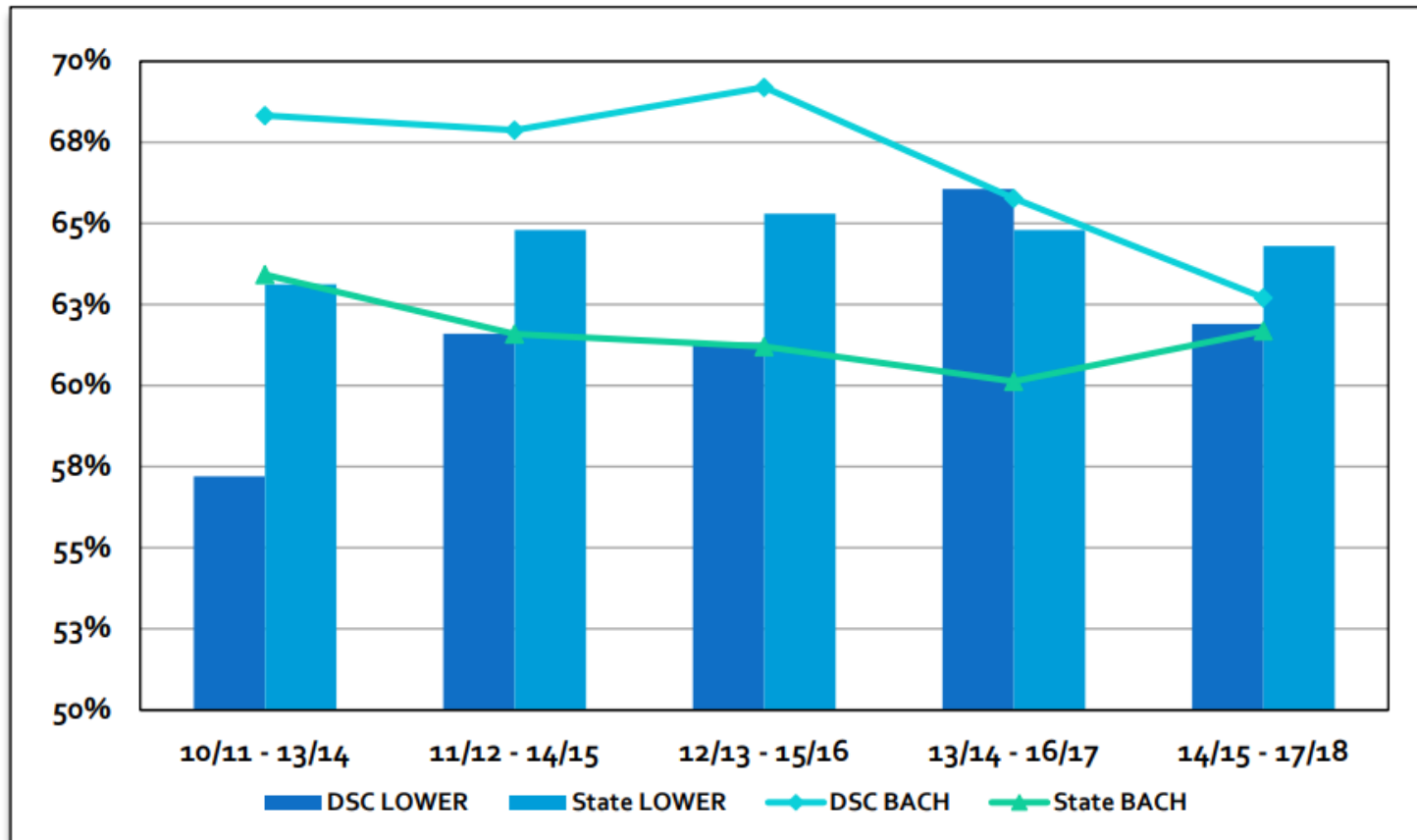
AA Graduate Transfer Rates

Graduate Year	Total AA Graduates	Type of Transfer Institution							
		State University System (SUS)		Private University		Florida College System (FCS)		DSC Bach	
		#	%	#	%	#	%	#	%
2012/13	1,786	569	31.9%	72	4.0%	236	13.2%	350	19.6%
2013/14	1,626	501	30.8%	52	3.2%	196	12.1%	298	18.3%
2014/15	1,668	544	32.6%	41	2.5%	183	11.0%	347	20.8%
2015/16	1,707	530	31.0%	63	3.7%	186	10.9%	278	16.3%
2016/17	1,691	594	35.1%	58	3.4%	211	12.5%	255	15.1%



Retention by Degree

Tracking Period	AA		AS/AAS		PSVC/ATD		Bach	
	DSC	State	DSC	State	DSC	State	DSC	State
10/11 – 13/14	59.4%	64.1%	44.0%	52.3%	90.0%	89.8%	68.3%	63.4%
11/12 – 14/15	62.8%	65.6%	51.9%	54.4%	79.3%	90.4%	67.9%	61.6%
12/13 – 15/16	60.6%	66.1%	58.0%	53.1%	89.4%	91.0%	69.2%	61.2%
13/14 – 16/17	65.8%	65.2%	58.2%	53.2%	87.8%	91.7%	65.8%	60.1%
14/15 – 17/18	61.5%	64.5%	54.6%	54.7%	89.4%	91.9%	62.7%	61.7%

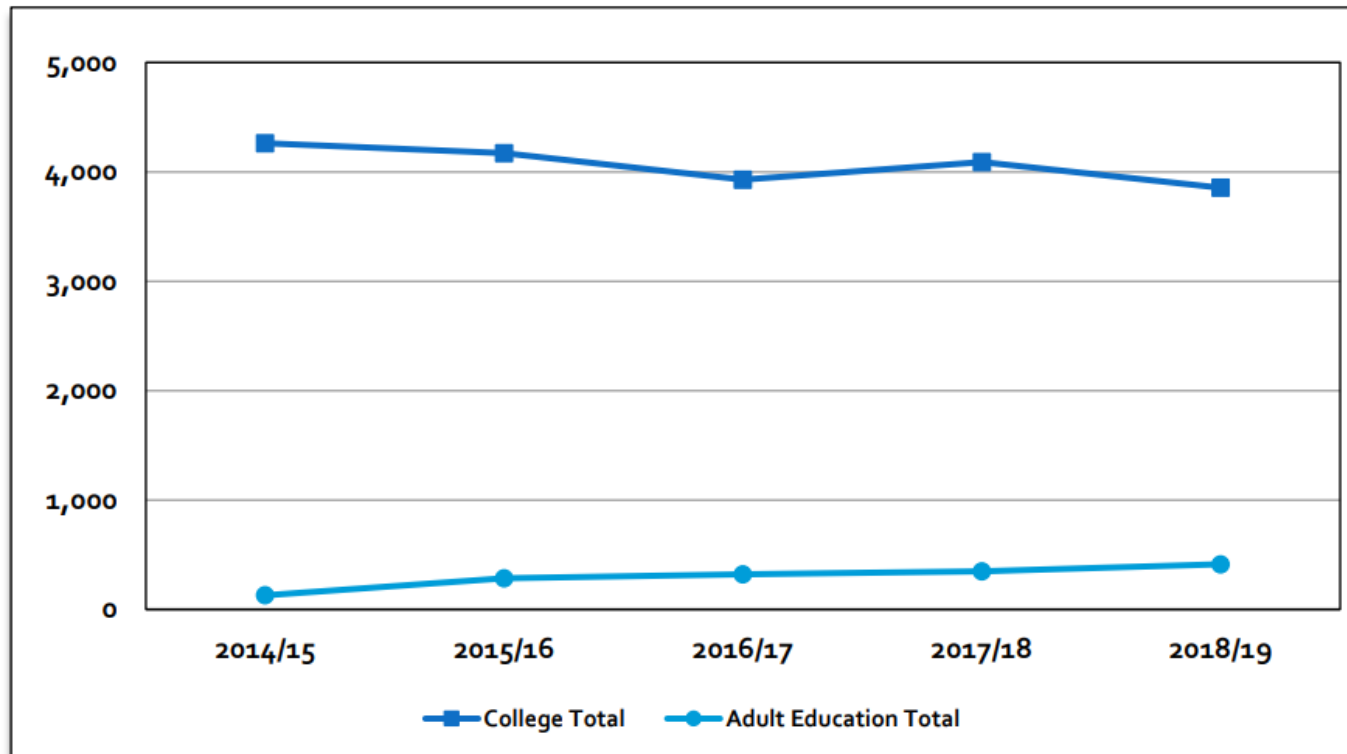


Retention captures status of FTIC students who graduated or are still enrolled measured after 4 years for AA/AS/AAS (who completed at least 18 college-level credits), after 2 years for PSVC/ATD (who completed at least 9 college-level credits), and after 4 years for first time BAS/BS.

Source: M1P2

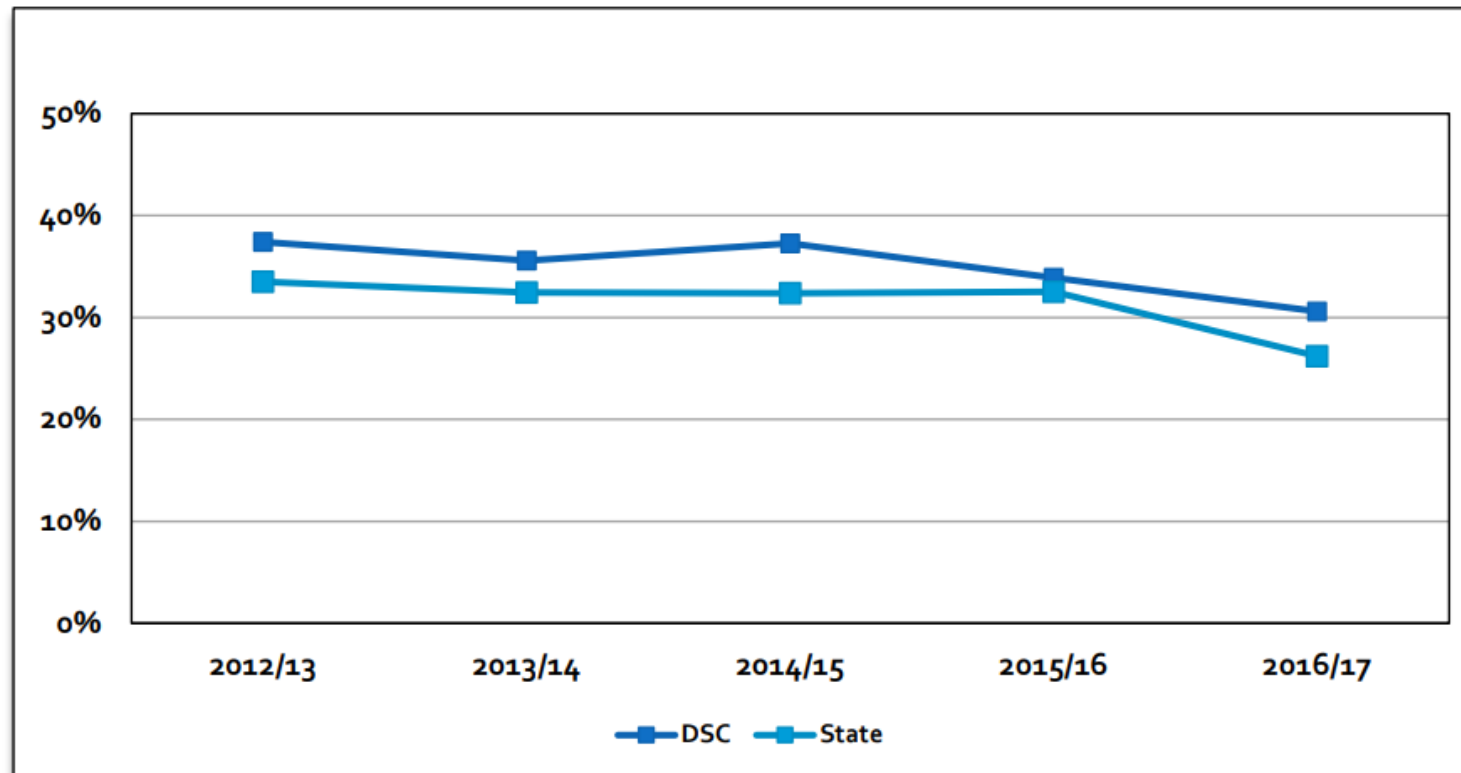
Graduate by Degree

Year	College					Adult Education	
	UD	AA	AS/AAS	Cert	EPI	AHS	GED
2014/15	498	1,675	723	1,360	6	7	121
2015/16	469	1,721	720	1,245	15	9	276
2016/17	461	1,704	659	1,090	16	9	310
2017/18	437	1,835	674	1,132	12	9	339
2018/19	485	1,721	652	989	8	9	403



High School Capture Rate

Year Enrolled at DSC	Number of Graduates	Number Captured at DSC	DSC Capture Rate	State Capture Rate
2012/13	4,242	1,509	35.6%	32.5%
2013/14	4,273	1,592	37.3%	32.4%
2014/15	4,294	1,455	33.9%	32.5%
2015/16	4,426	1,355	30.6%	26.2%
2016/17	4,581	1,454	31.7%	24.6%



Enrollment is limited to prior year public high school graduates from the DSC service area (Volusia and Flagler counties).

Source: M1P1

Civitas – illumine Students

illumine

[PERSISTENCE](#)
[SCRATCHPAD](#)
[OUTREACH](#)
[NUDGE HUB](#)

SAVED FILTERS

FTIC - College Credi...

FILTERS

Prediction Score

Prediction Percentile

Campus

Department

Degree

Degree Program

College

Grouped Major

Undergraduate Type

Start Term

New/Transfer from DSC Student

Full-time vs. Part-time

Completed Terms

Credits Earned


OVERVIEW

ACTIVE FILTERS [Clear All](#)
7,285 of 14,484 Active Students [i](#)


Department
College of Arts and Sciences ×
[Save Filter](#) ▼

PERSISTENCE PREDICTION

Active Filter - 7,285


74%

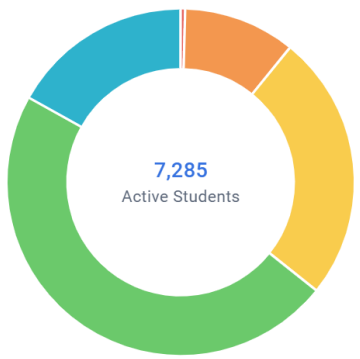
All Students - 14,484


71%

Spring 2020 - Fall 2020

PREDICTION DISTRIBUTION - SPRING 2020 - FALL 2020 [i](#)

Very Low	1%
Low	10%
Moderate	25%
High	47%
Very High	17%



7,285

Active Students

POWERFUL PREDICTORS

Powerful Predictors use historical data to show what variables are important to persistence for this group of students

Highest Signal

Rank 1

Rank 40

Lowest Signal

Rank 1 Rank 40

[Learn about Powerful Predictors](#)
[View All Powerful Predictors](#)

Civitas – illumine Courses

