



**DAYTONA
STATE COLLEGE**

Core Performance Indicators 2010 - 2011

**Institutional Research
August 1, 2011**

Daytona State College uses a variety of measures to evaluate its performance. The College tracks performance trends to evaluate its effectiveness over time and serve as the basis for planning and evaluation. The performance indicators are selected for this report based on the College's annual developmental objectives, other internal objectives, and accountability measures monitored by the Florida Department of Education. The following is a brief summary of the measures outlined in this report.

- **FTE by Year Across Discipline**

FTE increased from 15,478.6 to 16,241.6 (+4.9%) in 2010-11 as compared to 2009-10. Upper division FTE increased from 494.6 to 700.3 (+41.6%), lower division FTE increased from 13,512.3 to 14,199.9 (+5.1%) and Adult Education FTE decreased from 1,398.7 to 1,341.4 (-3.4%). FTE funding for Continuing Education was eliminated by the state, effective 2010-11.

- **Dual Enrollment**

Dual Enrollment student headcount decreased from 1,722 to 1,511 (-12.3%) and FTE decreased from 860 to 795 (-7.6%) in 2010-11 as compared to 2009-10.

- **Prior Year Public High School Graduate Capture Rate**

The high school graduate capture rate from Volusia and Flagler counties increased each year, from 37% in 2002-03 to 42.8% in 2010-11, and remains above the state average (34.6%).

- **Distance Education Enrollment**

Distance Education student headcount increased from 11,083 to 12,732 (+14.9%) and FTE increased from 3,035 to 3,782 (+4.6%) in 2010-11 as compared to 2009-10. One in two college credit students took at least one online course.

- **College Prep Success Rate**

The college prep success rate in reading decreased from 85.9% to 85.3% (-.6%) and in writing from 69.3% to 68.2% (-1.1%). Math increased from 80.1% to 82.9% (+2.8%) in 2010-11 as compared to 2009-10. The 2010-11 college prep success rates were above the state average in all areas; Reading (DSC- 85.3%, State- 73%), Writing (DSC- 68.2%, State- 67.4%), and Math (DSC- 82.9%, State- 55.3%). DSC has the highest college prep success rate in the state in Math and the third highest in Reading. DSC ranks fourteenth in the state in Writing.

- **Course Success Rates**

Overall, course success rates remained the same in 2010-11 as compared to 2009-10, at 73%. Upper division course success rates decreased 1% from 88% to 87% and lower division course success rates remained the same at 72%.

- **Degrees Awarded**

College degrees and certificates awarded increased from 3,663 to 4,765 (+30.1%) in 2010-11 as compared to 2009-10. Adult Education graduates decreased from 1,400 to 1,380 (-1.4%). High School graduates decreased from 40 to 39 (-.1%) and GED graduates decreased from 1,360 to 1,341 (-1.4%).

- **Graduation, Retention, & Success Rates**

Graduation and retention rates increased in 2010-11 as compared to 2009-10. Graduation rates increased from 34.8% to 38% (+3.2%) and retention rates from 65.5% to 67.5% (+2%). Graduation rates remain above the state average (DSC- 38%, State- 37.1%). Retention rates surpassed the state average (DSC- 67.5%, State- 66.8%). DSC's success rates in 2010-11 decreased from 83% to 80% (-3%) and are below the state average (DSC- 80%, State- 84.7%).

- **Licensure/Certification Exam Pass Rate**

Licensure/certification exam pass rates in 2010-11 ranged from 76% to 100% across all programs. Programs include: Corrections, Cosmetology, Dental Assisting, Dental Hygiene, EMT, Firefighting, Health Information Management, Law Enforcement, Massage Therapy, Medical Assisting, Nursing, Occupational Therapy Assistant, Paramedic, Physical Therapy Assistant, Practical Nursing, Radiography, Respiratory Care, and Surgical Technology.

- **Associate of Arts Graduate Outcomes**

After a 2 year tracking period, 74% of Daytona State College's 2008-09 AA graduates continued their education. 578 (45.3%) continued their education in the Florida State University System (SUS), 317 (20.3%) continued their education in the Florida College System, of which 58 (4.5%) were enrolled in DSC's baccalaureate degree programs, and 50 (3.9%) continued at a Florida private college or university.

- **Associate of Arts Graduates Enrolled in the FL SUS**

The majority of Daytona State College's students who continued their education in the (SUS) enrolled at UCF (66.3%). The next highest percentages of the AA graduates continued their education at USF (9.5%), FSU (7.2%), and UNF (7.1%).

- **Associate of Arts Degree Transfers to the FL SUS**

The percent of Daytona State College students who transferred to the SUS with a 2.5 G.P.A.(or higher) increased from 79.2% to 79.4% (+.2%) in 2010-11 as compared to 2009-10. The average SUS G.P.A. of DSC AA transfers was 3.04, exceeding The Florida College System AA transfer average SUS G.P.A. of 2.95.

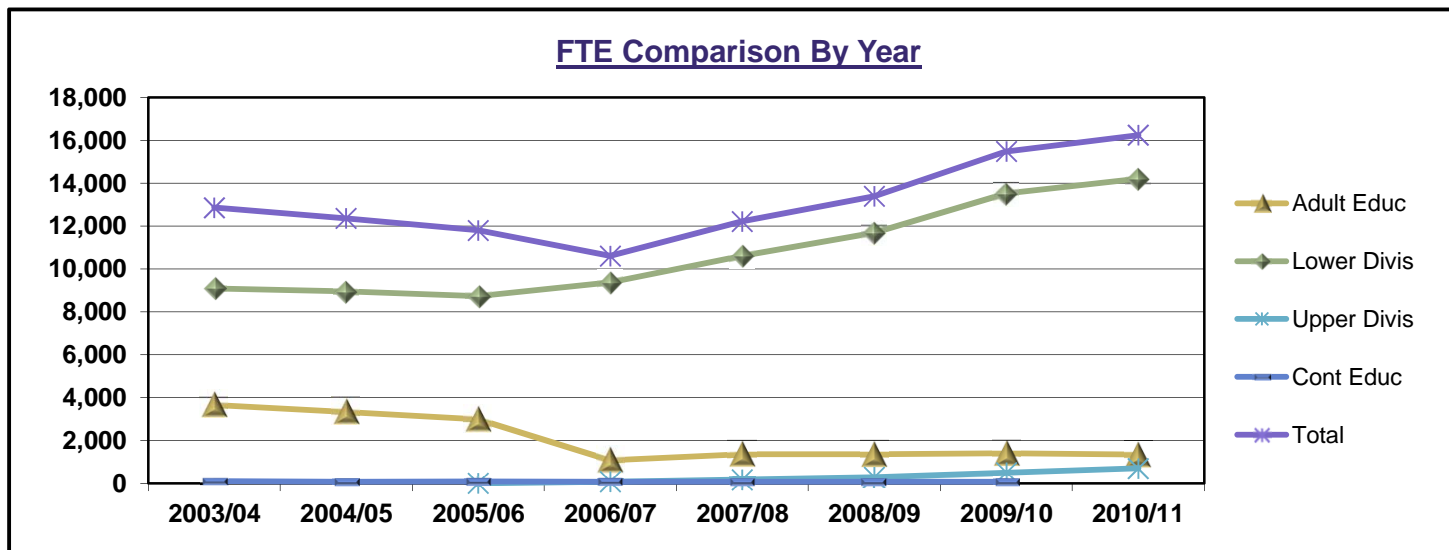
- **Vocational Program Graduate Outcomes**

Daytona State College's placement rate increased from 80% to 85% (+5%) in 2010-11 as compared to 2009-10.

Annual FTE (Funded) by Year Across Discipline

Year	UPPER DIVISION			LOWER DIVISION							ADULT EDUC						CONT EDUC	Annual Total	% Change	State Rank
	BAS	BS	Total	AP	APPR	CPRP	EPI	PSAV	PSV	Total	ABE	ESOL	AHS	GED	VPRP	Total	CWE			
2003/04				4,565.2	638.4	1,008.3		679.2	2,198.3	9,089.4	1,819.6	368.7	801.0	670.5	1.4	3,661.2	105.7	12,856.3	6.2%	8
2004/05				4,593.9	661.8	885.5		702.2	2,105.6	8,949.0	1,651.0	335.3	655.9	691.2	1.2	3,334.6	74.7	12,358.3	-3.9%	8
2005/06	3.1		3.1	4,568.1	608.3	832.1	15.0	677.2	2,022.4	8,723.1	1,526.5	338.2	550.1	571.7	1.2	2,987.7	83.7	11,797.6	-4.5%	9
2006/07	77.5		77.5	4,928.8	613.6	925.7	86.3	700.4	2,112.5	9,367.3	546.1	159.7	207.6	157.9	7.4	1,078.7	79.8	10,603.3	-10.1%	11
2007/08	175.7		175.7	5,675.0	641.4	1,068.3	84.8	757.1	2,382.9	10,609.5	691.1	240.5	208.5	201.5	22.8	1,364.4	68.7	12,218.3	15.2%	8
2008/09	272.7	12.7	285.4	6,487.9	562.2	1,157.8	62.0	806.1	2,601.6	11,677.6	721.0	263.6	163.3	192.0	11.0	1,350.9	68.8	13,382.7	9.5%	8
2009/10	409.4	85.2	494.6	7,570.2	541.5	1,635.1	26.6	939.7	2,799.2	13,512.3	856.2	256.7	80.8	205.0		1,398.7	73.0	15,478.6	15.7%	8
2010/11	475.6	224.7	700.3	8,287.9	451.3	1,671.2		854.3	2,935.2	14,199.9	854.4	246.4	70.5	170.1		1,341.4		16,241.6	4.9%	8

Note: Adults with Disabilities, Lifelong Learning and Recreation and Leisure not included.



AE FTE formula changed to FTE by attendance in 2006/07.

BAS- SP06, BSED- SP09, BSET- FA10

EPI- FA05-SP10, Registered in upper div Educ courses (SU10).

VPRP offered for zero credits starting SP09

CWE Not Funded for FTE- SU10

Source: STU.FTERPT.

Dual Enrollment

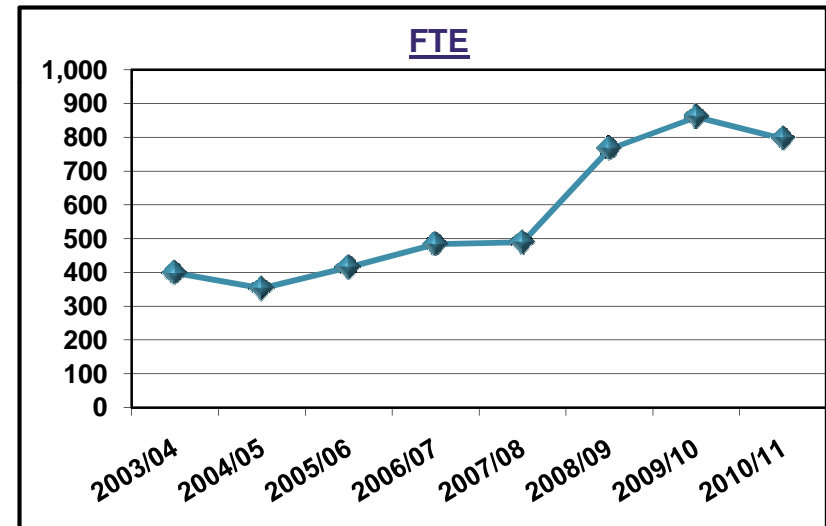
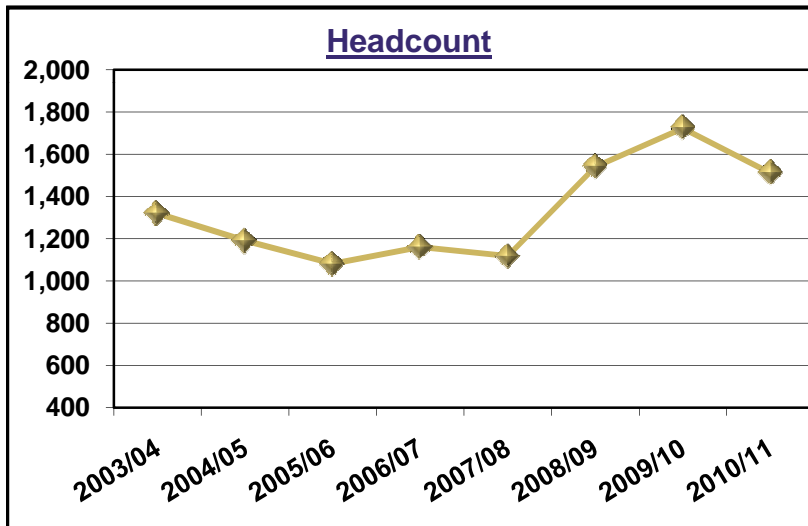
Headcount

Year	A&P	PSV	PSAV	Total	% Change
2003/04	669	793	121	1,320	7.6%
2004/05	721	634	71	1,190	-9.8%
2005/06	855	410	53	1,082	-9.1%
2006/07	913	411	55	1,160	7.2%
2007/08	872	430	61	1,118	-3.6%
2008/09	1,342	464	83	1,540	37.7%
2009/10	1,563	313	164	1,722	11.8%
2010/11	1,487	249	14	1,511	-12.3%

Note: Headcounts are duplicated across disciplines, unduplicated in Total.

FTE

Year	A&P	PSV	PSAV	Total	% Change
2003/04	168	190	40	398	14.4%
2004/05	185	145	23	353	-11.3%
2005/06	274	121	21	415	17.6%
2006/07	347	116	20	484	16.6%
2007/08	350	117	23	489	1.0%
2008/09	575	149	41	765	56.4%
2009/10	742	76	42	860	12.4%
2010/11	747	42	6	795	-7.6%

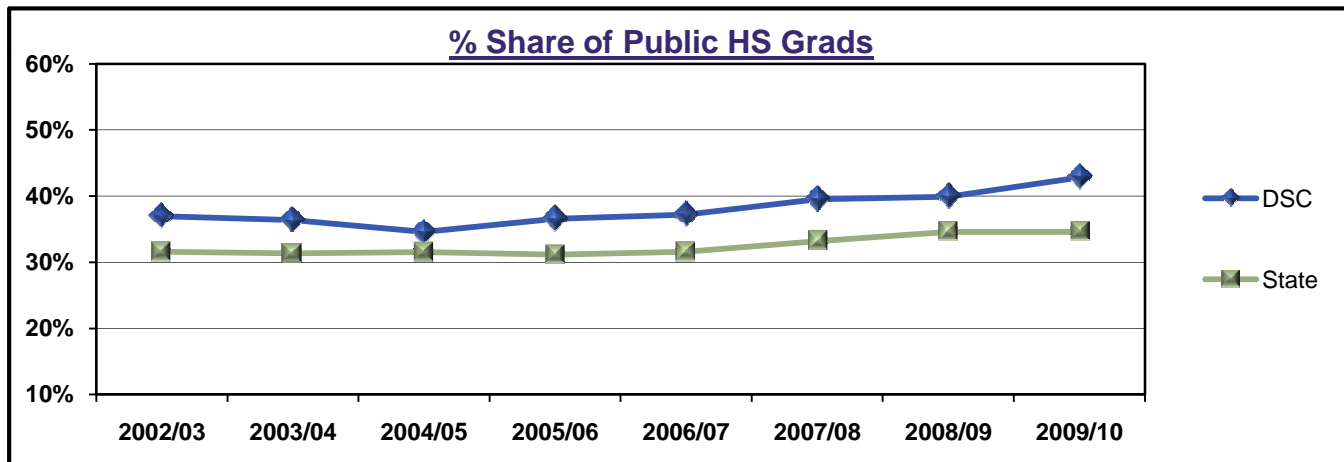


FL State Accountability Measure

Prior Year Public High School Graduate Capture Rate

Prior year public high school graduates from Volusia and Flagler counties who enrolled at Daytona State .

Year Enrolled at DSC	DSC	State	State Rank
2002/03	37.0%	31.6%	9
2003/04	36.4%	31.3%	9
2004/05	34.6%	31.6%	11
2005/06	36.6%	31.2%	7
2006/07	37.2%	31.6%	10
2007/08	39.5%	33.2%	8
2008/09	39.9%	34.6%	9
2009/10	42.8%	34.6%	Not Available Yet



Source: FL Accountability Measure 1 Part 1

Enrollment is limited to prior year public high school graduates from the community college service area (Volusia and Flagler counties).

Distance Education College Credit

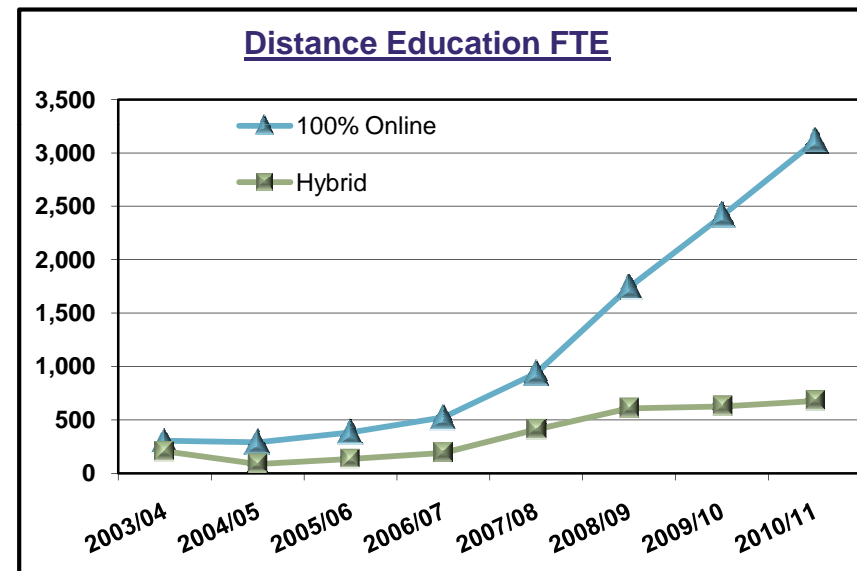
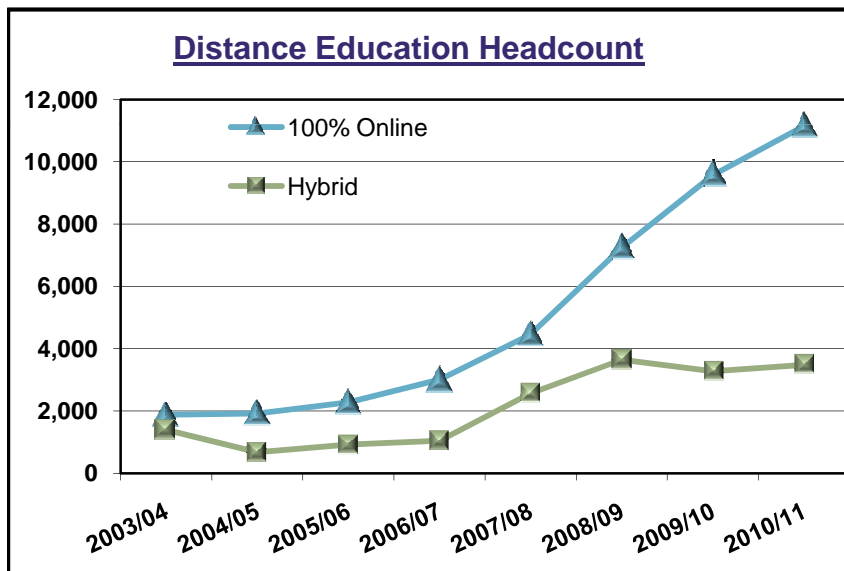
Headcount

Year	100% Online	Hybrid	Total	% Change
2003/04	1,872	1,398	3,053	76.3%
2004/05	1,915	673	2,430	-20.4%
2005/06	2,281	919	2,901	19.4%
2006/07	3,002	1,048	3,586	23.6%
2007/08	4,455	2,562	6,023	68.0%
2008/09	7,237	3,641	9,271	53.9%
2009/10	9,578	3,279	11,083	19.5%
2010/11	11,142	3,477	12,732	14.9%

Note: Students are duplicated across Instructional Methods; Unduplicated in Total

FTE

Year	100% Online	Hybrid	Total	% Change
2003/04	305	205	510	66.7%
2004/05	290	87	377	-26.1%
2005/06	382	133	515	36.6%
2006/07	524	192	716	39.0%
2007/08	937	409	1,346	88.0%
2008/09	1739	608	2,348	74.4%
2009/10	2410	625	3,035	29.3%
2010/11	3107	675	3,782	24.6%



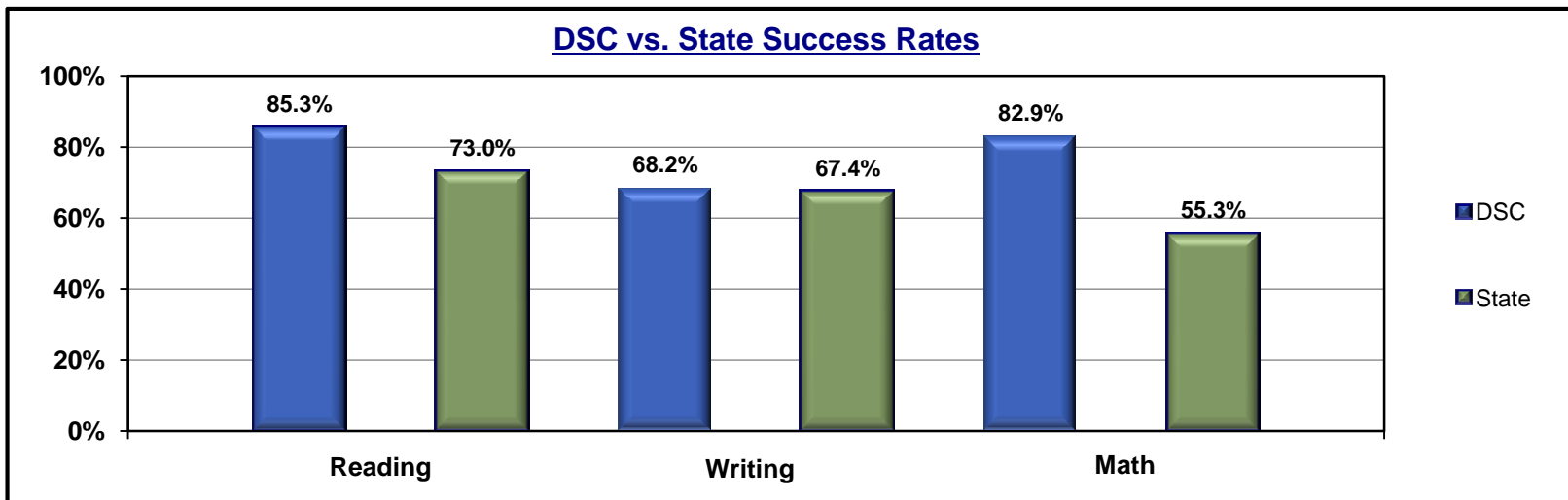
FL State Accountability Measure

College Prep Success Rate

Students who failed an entry level test (CPT) at the beginning of the tracking period who passed the highest level of the associated prep course.

3-Year Tracking Period	Reading			Writing			Math		
	Passed Highest Level			Passed Highest Level			Passed Highest Level		
	DSC	State	State Rank	DSC	State	State Rank	DSC	State	State Rank
00/01 - 02/03	86.3%	73.0%	2	68.2%	67.9%	11	71.4%	53.1%	1
01/02 - 03/04	83.0%	71.4%	5	66.8%	64.5%	8	68.0%	54.3%	4
02/03 - 04/05	87.7%	71.4%	1	68.4%	65.8%	11	75.3%	52.1%	1
03/04 - 05/06	84.8%	71.4%	2	73.1%	65.1%	6	68.6%	53.0%	2
04/05 - 06/07	83.7%	69.9%	2	66.3%	63.7%	12	67.0%	53.0%	3
05/06 - 07/08	83.7%	68.3%	2	76.1%	62.5%	4	68.4%	51.7%	3
06/07 - 08/09	85.9%	70.6%	2	69.3%	64.2%	9	80.1%	55.5%	1
07/08 - 09/10	85.3%	73.0%	3	68.2%	67.4%	14	82.9%	55.3%	1

Note: Cohort includes FTIC and previous year high school graduates who were dual enrolled within the prior 2 years.



Source: FL Accountability Measure 4 Parts 1 and 2

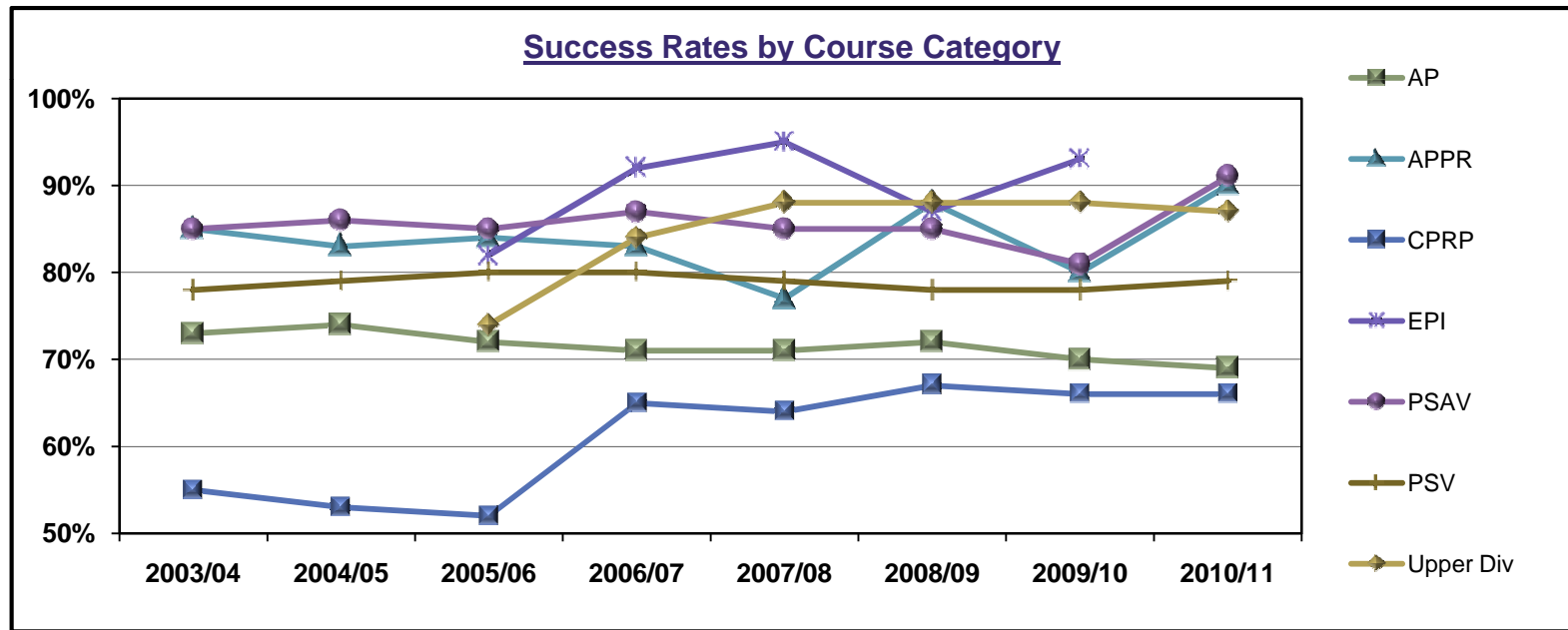
* 8 week courses FA06

* Redesign of math curriculum FA06

Course Success Rates

Percent of students completing a course with a grade of C or higher.

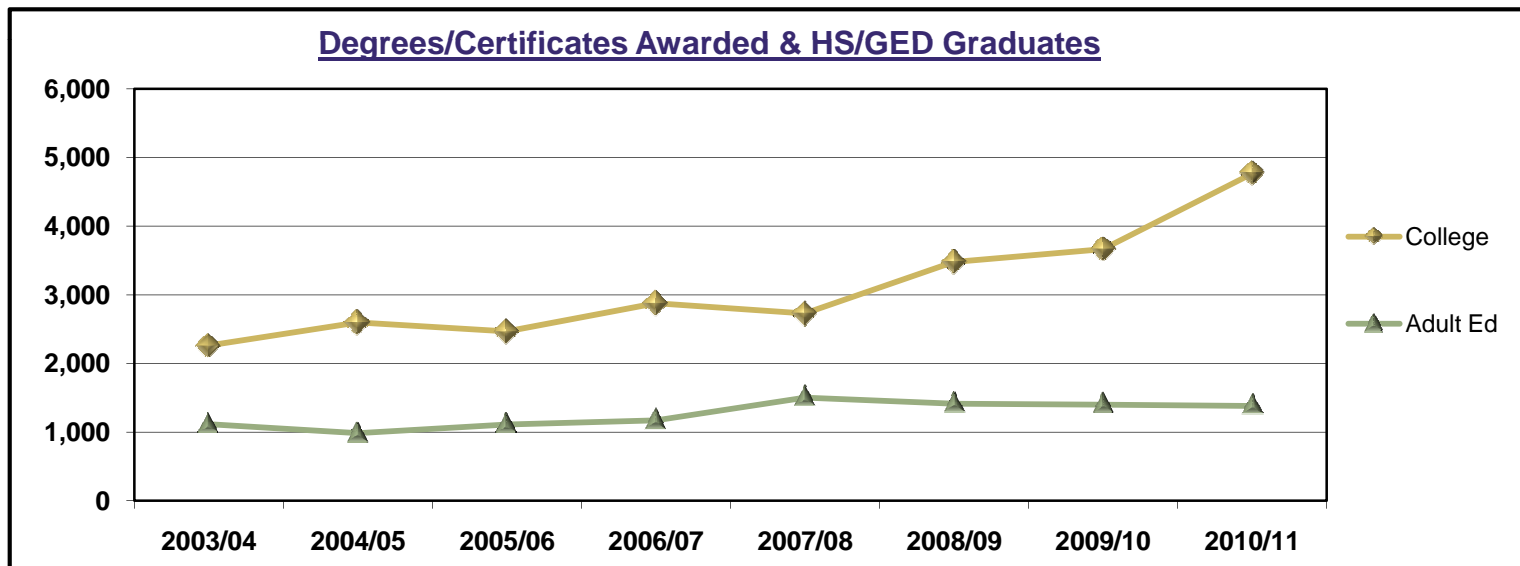
	UPPER			LOWER							Total
Year	BAS	BS	Upper Total	AP	APPR	CPRP	EPI	PSAV	PSV	Lower Total	
2003/04				73%	85%	55%		85%	78%	74%	74%
2004/05				74%	83%	53%		86%	79%	74%	74%
2005/06	74%		74%	72%	84%	52%	82%	85%	80%	73%	73%
2006/07	84%		84%	71%	83%	65%	92%	87%	80%	74%	74%
2007/08	88%		88%	71%	77%	64%	95%	85%	79%	73%	74%
2008/09	88%	79%	88%	72%	88%	67%	87%	85%	78%	74%	74%
2009/10	89%	88%	88%	70%	80%	66%	93%	81%	78%	72%	73%
2010/11	90%	81%	87%	69%	90%	66%		91%	79%	72%	73%



Graduates by Degree Awarded

Year	College											Adult Education				
	BACH			AA	AS/AAS			CERT	EPI	Total	% Change	State Rank	HS	GED	Total	% Change
	BAS	BS	Total		AS	AAS	Total									
2003/04				894	336	112	448	920		2,262	2.7%	*11	81	1,035	1,116	37.1%
2004/05				860	361	131	492	1,244		2,596	14.8%	*10	61	925	986	-11.6%
2005/06				958	349	146	495	1,013		2,466	-5.0%	*10	83	1,026	1,109	12.5%
2006/07	6		6	980	389	163	552	1,309	28	2,875	16.6%	*9	61	1,108	1,169	5.4%
2007/08	34		34	1,013	379	164	543	1,059	77	2,726	-5.2%	*11	42	1,461	1,503	28.6%
2008/09	97		97	1,285	440	181	621	1,384	89	3,476	27.5%	*8	51	1,364	1,415	-5.9%
2009/10	178		178	1,462	402	216	618	1,342	63	3,663	5.4%	10	40	1,360	1,400	-1.1%
2010/11	226	47	273	1,941	469	288	757	1,754	40	4,765	30.1%		39	1,341	1,380	-1.4%

* Does not include baccalaureate degrees.



Source: STU.AA1ARPT, STU.WFCOMRPT

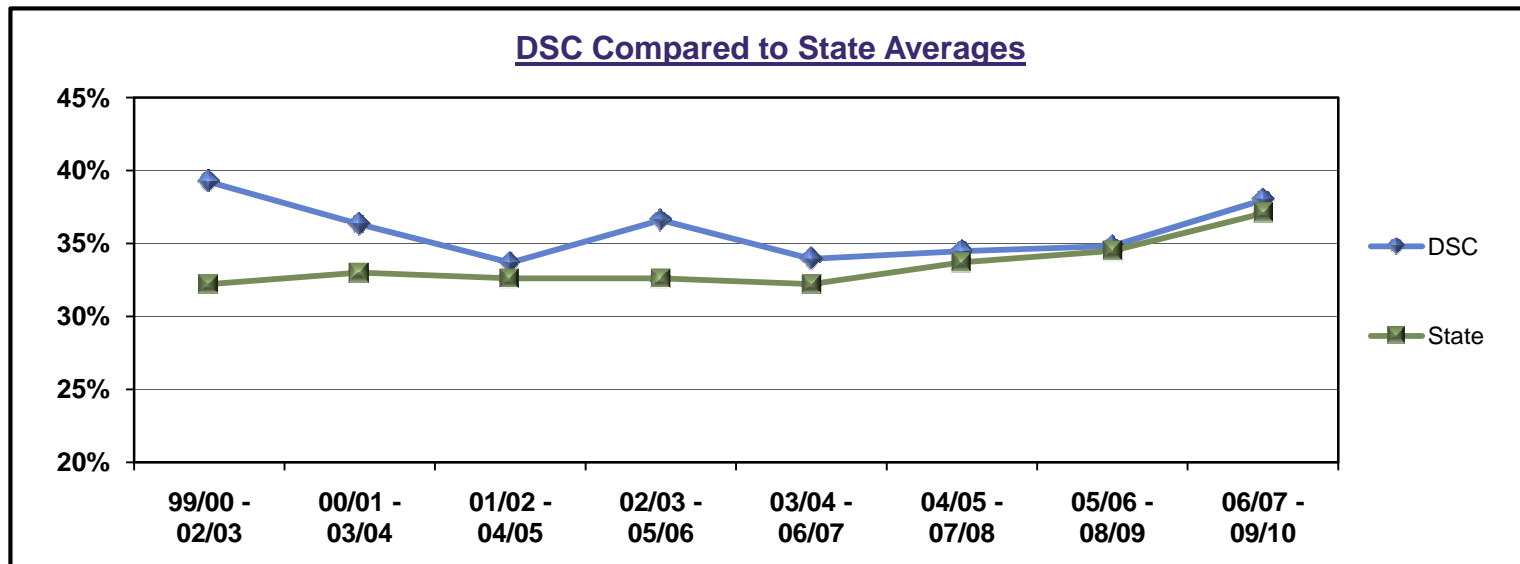
* "Auto Grad" process- 2010/11

FL State Accountability Measure

Graduation Rates

Status of FTIC students, after (4) years for AA/AS/AAS, who have completed at least 18 college-level credits and after (2) years for PSVC/ATD, who have completed at least 9 college level credits.

Tracking Period	AA		AS/AAS		PSVC/ ATD		TOTAL		
	DSC	State	DSC	State	DSC	State	DSC	State	State Rank
99/00 - 02/03	47.0%	33.4%	16.3%	19.0%	84.4%	69.2%	39.2%	32.2%	10
00/01 - 03/04	44.2%	34.7%	17.8%	18.5%	59.4%	64.2%	36.3%	33.0%	16
01/02 - 04/05	44.1%	34.5%	11.7%	16.4%	71.4%	68.7%	33.7%	32.6%	17
02/03 - 05/06	49.0%	34.4%	12.5%	15.2%	66.7%	73.5%	36.6%	32.6%	13
03/04 - 06/07	44.8%	34.1%	14.4%	15.5%	54.6%	68.7%	34.0%	32.2%	14
04/05 - 07/08	43.3%	35.1%	13.5%	16.6%	58.8%	70.9%	34.5%	33.7%	19
05/06 - 08/09	38.4%	36.0%	14.2%	16.5%	81.7%	72.4%	34.8%	34.5%	19
06/07 - 09/10	42.5%	38.8%	17.2%	17.7%	71.7%	75.6%	38.0%	37.1%	17



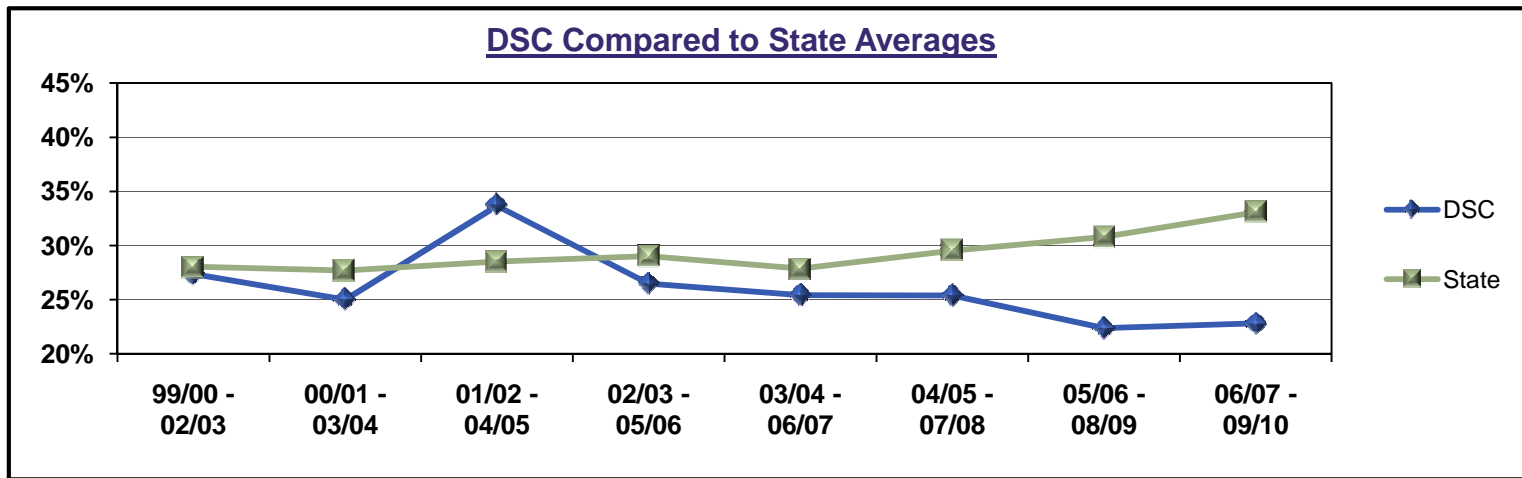
FL State Accountability Measure

Graduation Rates

(College Prep Students)

Status of FTIC students, after (4) years for AA/AS/AAS, who have completed at least 18 college-level credits and after (2) years for PSVC/ATD, who have completed at least 9 college level credits, and who have completed all necessary college prep requirements.

Tracking Period	AA		AS/AAS		PSVC/ ATD		TOTAL		
	DSC	State	DSC	State	DSC	State	DSC	State	State Rank
99/00 - 02/03	33.9%	29.0%	13.6%	20.5%	80.0%	74.1%	27.4%	28.1%	16
00/01 - 03/04	25.2%	28.9%	13.7%	17.6%	80.0%	80.0%	25.0%	27.7%	23
01/02 - 04/05	44.1%	30.1%	11.7%	14.8%	71.4%	82.5%	33.7%	28.5%	26
02/03 - 05/06	42.2%	30.7%	9.7%	14.9%	41.7%	81.7%	26.5%	29.0%	21
03/04 - 06/07	33.1%	29.8%	13.4%	13.0%	62.5%	87.3%	25.4%	27.9%	20
04/05 - 07/08	33.9%	31.2%	8.2%	14.7%	50.0%	83.0%	25.4%	29.5%	23
05/06 - 08/09	23.6%	32.6%	14.1%	15.3%	64.3%	82.3%	22.4%	30.8%	26
06/07 - 09/10	27.7%	35.1%	11.0%	15.5%	57.1%	84.8%	22.8%	33.1%	28



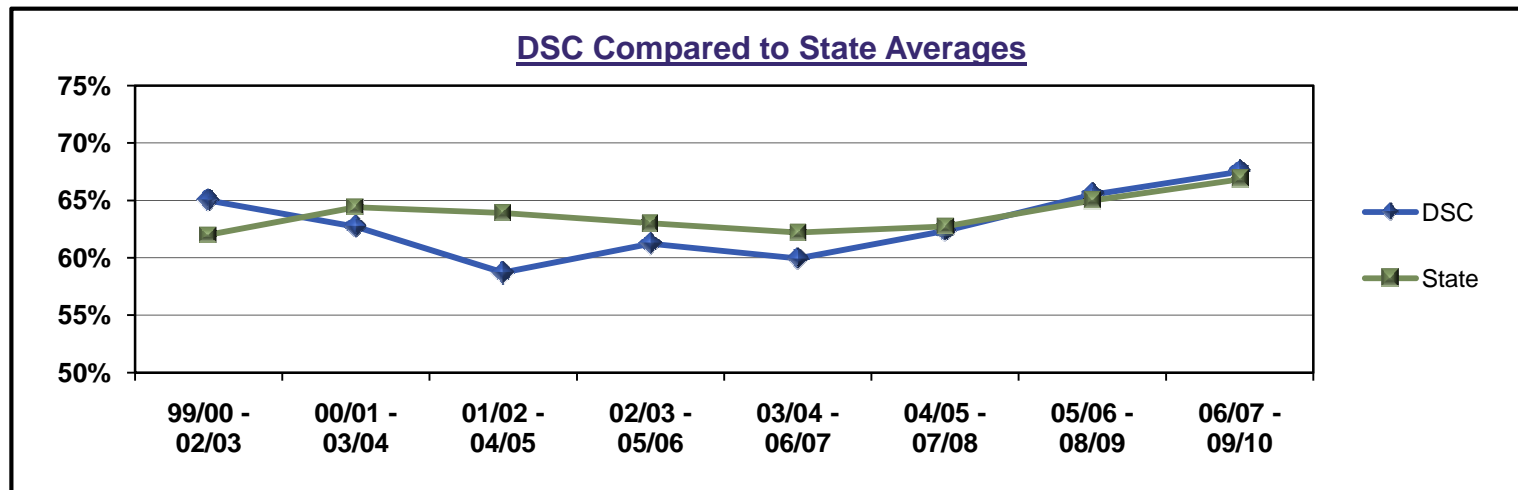
FL State Accountability Measure

Retention Rates

Status of FTIC students, after (4) years for AA/AS/AAS, who have completed at least 18 college-level credits and after (2) years for PSVC/ATD, who have completed at least 9 college level credits.

Tracking Period	AA		AS/AAS		PSVC/ ATD		TOTAL		
	DSC	State	DSC	State	DSC	State	DSC	State	State Rank
99/00 - 02/03	67.1%	61.7%	56.3%	58.1%	96.7%	88.3%	65.0%	62.0%	10
00/01 - 03/04	64.3%	64.2%	56.9%	60.7%	81.3%	86.0%	62.7%	64.4%	16
01/02 - 04/05	63.5%	63.6%	46.1%	59.7%	91.8%	89.6%	58.7%	63.9%	21
02/03 - 05/06	63.7%	63.1%	53.0%	84.4%	88.2%	90.3%	61.2%	63.0%	18
03/04 - 06/07	65.5%	62.8%	49.7%	53.7%	72.7%	85.6%	60.0%	62.2%	18
04/05 - 07/08	64.8%	63.0%	54.6%	55.1%	80.4%	86.9%	62.3%	62.7%	16
05/06 - 08/09	68.7%	65.1%	51.9%	58.2%	90.2%	88.9%	65.5%	65.0%	14
06/07 - 09/10	71.2%	67.0%	50.6%	59.9%	94.6%	89.1%	67.5%	66.8%	14

Note: Retention- Students who graduated, were still enrolled in good standing (gpa >= 2.0), or still enrolled not in good standing (gpa < 2.0).

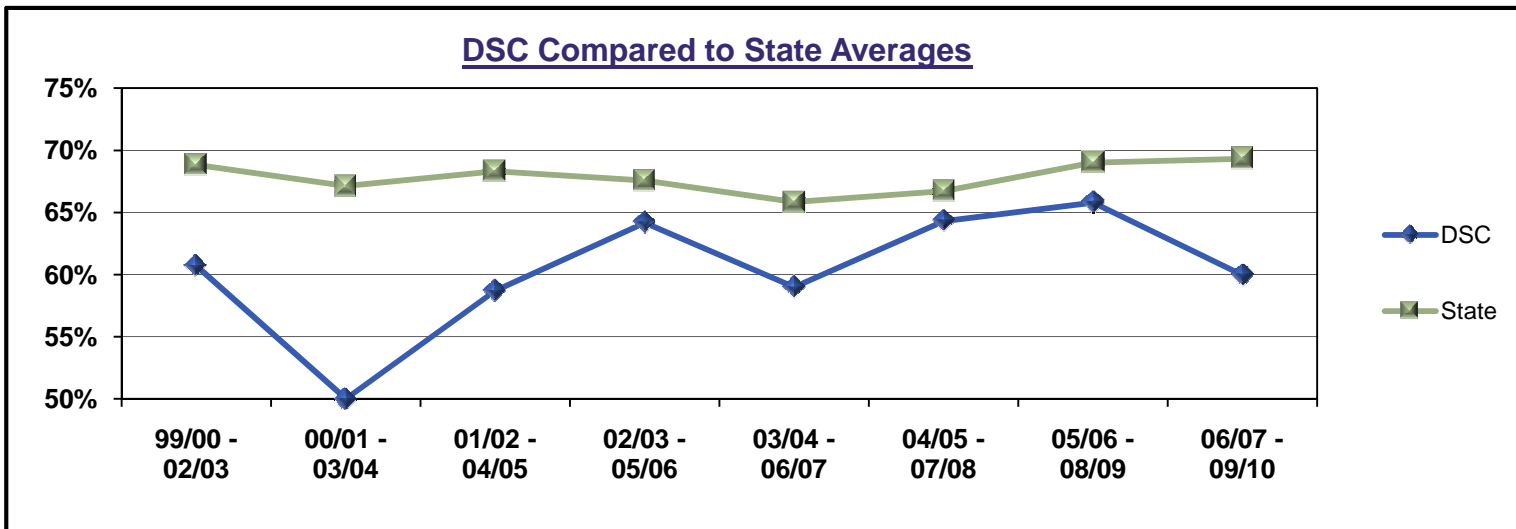


FL State Accountability Measure

Retention Rates (College Prep Students)

Status of FTIC students, after (4) years for AA/AS/AAS, who have completed at least 18 college-level credits and after (2) years for PSVC/ATD, who have completed at least 9 college level credits, and who have completed all necessary college prep requirements.

Tracking Period	AA		AS/AAS		PSVC/ ATD		TOTAL		
	DSC	State	DSC	State	DSC	State	DSC	State	State Rank
99/00 - 02/03	61.8%	66.2%	56.0%	66.7%	100.0%	100.0%	60.7%	68.8%	19
00/01 - 03/04	55.1%	67.0%	60.3%	64.7%	100.0%	98.46%	50.0%	67.1%	24
01/02 - 04/05	63.5%	66.0%	46.1%	69.1%	91.8%	97.7%	58.7%	68.3%	27
02/03 - 05/06	68.2%	67.4%	58.7%	64.3%	83.3%	99.1%	64.2%	67.6%	14
03/04 - 06/07	65.0%	66.2%	49.6%	60.4%	87.5%	98.8%	59.0%	65.9%	16
04/05 - 07/08	64.9%	66.9%	62.35	62.3%	100.0%	96.4%	64.3%	66.7%	15
05/06 - 08/09	63.9%	68.8%	65.7%	66.2%	92.9%	98.3%	65.8%	69.0%	17
06/07 - 09/10	65.1%	69.5%	47.1%	63.9%	100.0%	99.3%	60.0%	69.3%	23



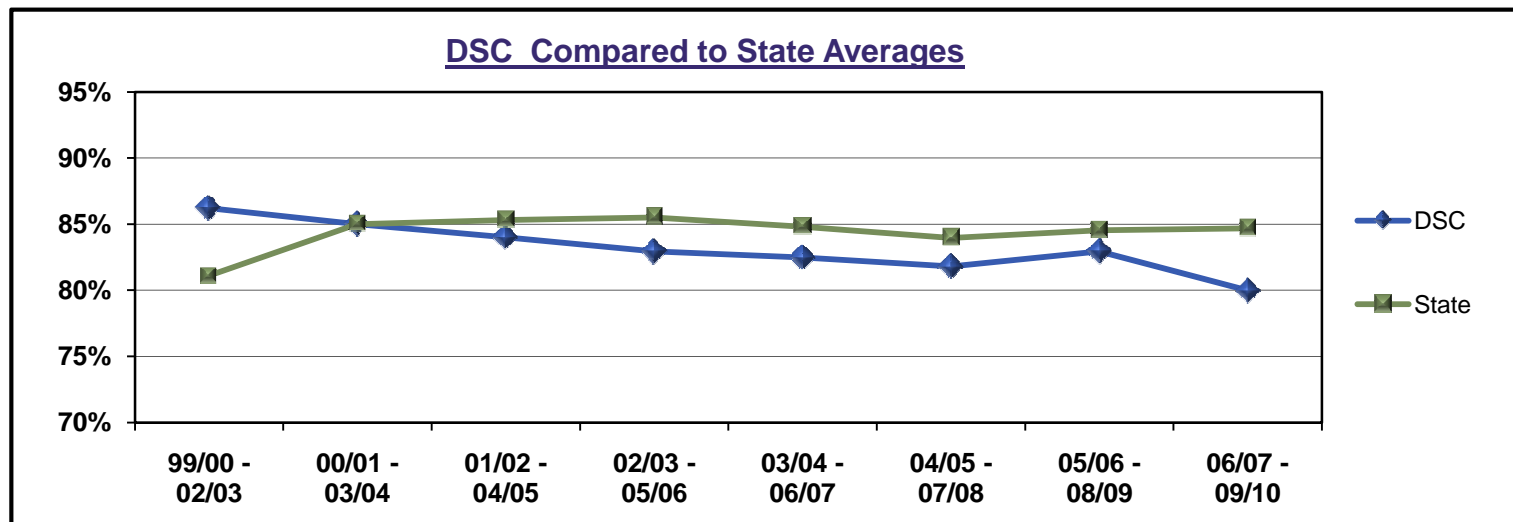
FL State Accountability Measure

Success Rates

Status of FTIC students, after (4) years for AA/AS/AAS, who have completed at least 18 college-level credits and after (2) years for PSVC/ATD, who have completed at least 9 college level credits.

Tracking Period	AA		AS/AAS		PSVC/ ATD		TOTAL		
	DSC	State	DSC	State	DSC	State	DSC	State	State Rank
99/00 - 02/03	87.9%	81.0%	81.3%	79.9%	96.9%	89.0%	86.2%	81.1%	9
00/01 - 03/04	86.6%	85.1%	81.8%	83.6%	84.4%	89.6%	85.0%	85.0%	17
01/02 - 04/05	84.8%	85.3%	81.8%	83.8%	89.8%	92.0%	84.0%	85.3%	19
02/03 - 05/06	87.3%	85.5%	76.3%	84.4%	82.4%	90.3%	82.9%	85.5%	23
03/04 - 06/07	85.7%	85.1%	77.5%	82.4%	84.1%	89.8%	82.5%	84.8%	19
04/05 - 07/08	85.0%	84.0%	76.3%	82.4%	78.4%	89.6%	81.8%	84.0%	20
05/06 - 08/09	84.3%	84.7%	77.2%	82.5%	93.9%	89.7%	83.0%	84.5%	19
06/07 - 09/10	82.8%	85.0%	72.0%	81.9%	83.8%	88.7%	80.0%	84.7%	24

* Success- Students who graduated, were still enrolled in good standing (gpa >= 2.0), or left in good standing (gpa >= 2.0).

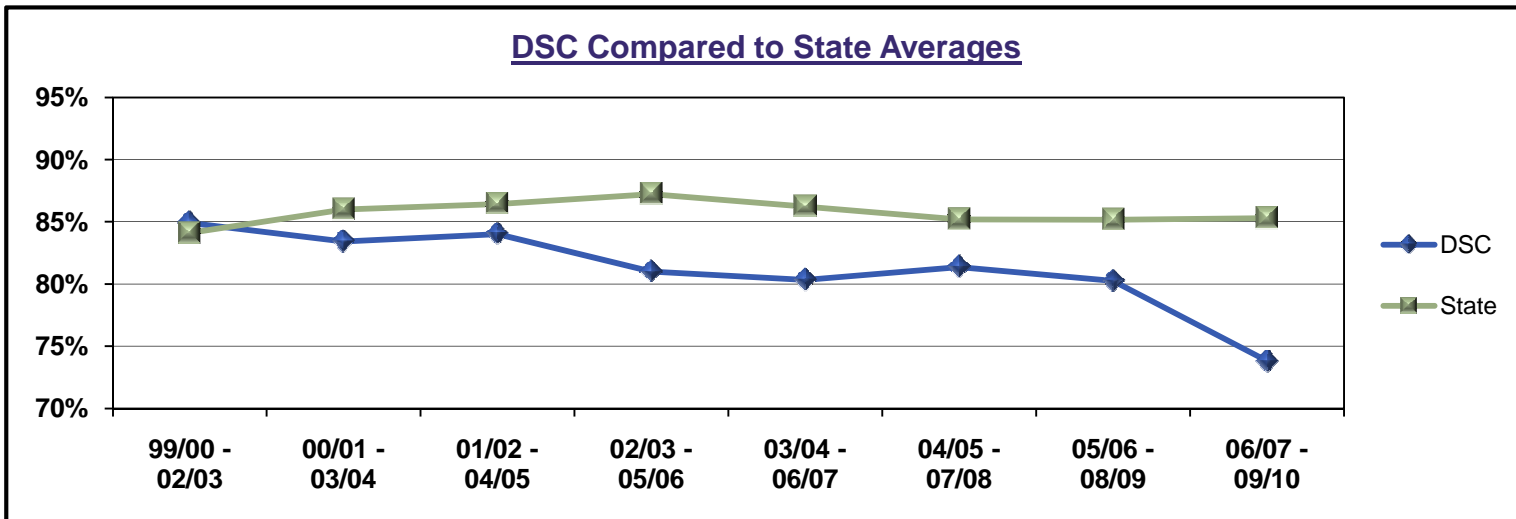


FL State Accountability Measure

Success Rates (College Prep Students)

Status of FTIC students, after (4) years for AA/AS/AAS, who have completed at least 18 college-level credits and after (2) years for PSVC/ATD, who have completed at least 9 college level credits, and who have completed all necessary college prep requirements.

Tracking Period	AA		AS/AAS		PSVC/ ATD		TOTAL		
	DSC	State	DSC	State	DSC	State	DSC	State	State Rank
99/00 - 02/03	85.8%	83.9%	82.4%	84.8%	100.0%	87.5%	84.9%	84.1%	14
00/01 - 03/04	84.3%	85.9%	80.8%	85.3%	100.0%	96.2%	83.4%	86.0%	22
01/02 - 04/05	84.8%	86.2%	81.8%	86.4%	89.8%	96.3%	84.0%	86.4%	24
02/03 - 05/06	85.7%	87.2%	78.7%	86.9%	50.0%	92.0%	81.0%	87.2%	25
03/04 - 06/07	84.4%	86.4%	74.8%	84.6%	87.5%	95.6%	80.3%	86.2%	23
04/05 - 07/08	86.1%	85.1%	71.8%	84.4%	100.0%	94.2%	81.4%	85.2%	21
05/06 - 08/09	81.7%	85.1%	78.8%	84.9%	71.4%	91.8%	80.3%	85.2%	20
06/07 - 09/10	77.7%	85.4%	67.1%	83.5%	71.4%	93.1%	73.8%	85.3%	25



FL State Accountability Measure

Licensure/Certification Exam Pass Rate

Program	2002-03	2003-04	2004-05	2005-06	2006-07	2007-08	2008-09	2009-10
Corrections	*	93.0%	97.0%	97.0%	95.0%	95.0%	92.3%	86.0%
Cosmetology	*	*	*	*	96.4%	*	86.3%	89.0%
** Dental Assisting	100.0%	71.0%	100.0%	89.0%	75.0%	100.0%	100.0%	100.0%
Dental Hygiene	83.3%	92.3%	81.8%	100.0%	100.0%	93.3%	83.0%	92.0%
Emergency Medical Technician	*	94.0%	68.0%	96.0%	76.2%	73.2%	74.4%	76.3%
Firefighting	82.0%	82.0%	81.0%	70.0%	86.0%	90.3%	83.1%	89.0%
** Health Information Management	*	*	80.0%	83.0%	83.0%	83.0%	100.0%	100.0%
Law Enforcement	*	84.0%	84.0%	88.0%	93.0%	94.0%	91.1%	88.0%
Massage Therapy	*	100.0%	100.0%	94.0%	75.0%	75.0%	90.0%	94.0%
** Medical Assisting	*	100.0%	91.0%	89.0%	85.7%	75.0%	85.0%	79.0%
Nursing	89.6%	91.3%	89.0%	87.0%	85.0%	91.7%	86.0%	89.7%
Occupational Therapy Assistant	*	60.0%	75.0%	82.0%	78.0%	66.6%	76.0%	91.0%
Paramedic	*	*	*	*	*	*	100.0%	100.0%
Physical Therapy Assistant	56.0%	67.0%	80.0%	53.0%	87.0%	93.0%	85.0%	95.0%
Practical Nursing	89.6%	93.7%	93.1%	92.0%	98.0%	87.3%	85.9%	96.8%
Radiography	100.0%	100.0%	100.0%	100.0%	100.0%	100.0%	100.0%	100.0%
Respiratory Care	*	100.0%	83.0%	93.0%	100.0%	86.4%	90.0%	77.0%
** Surgical Technology	*	55.0%	20.0%	58.0%	75.0%	80.0%	80.0%	76.0%

* Not available from department

** Certification- (Not required for employment)

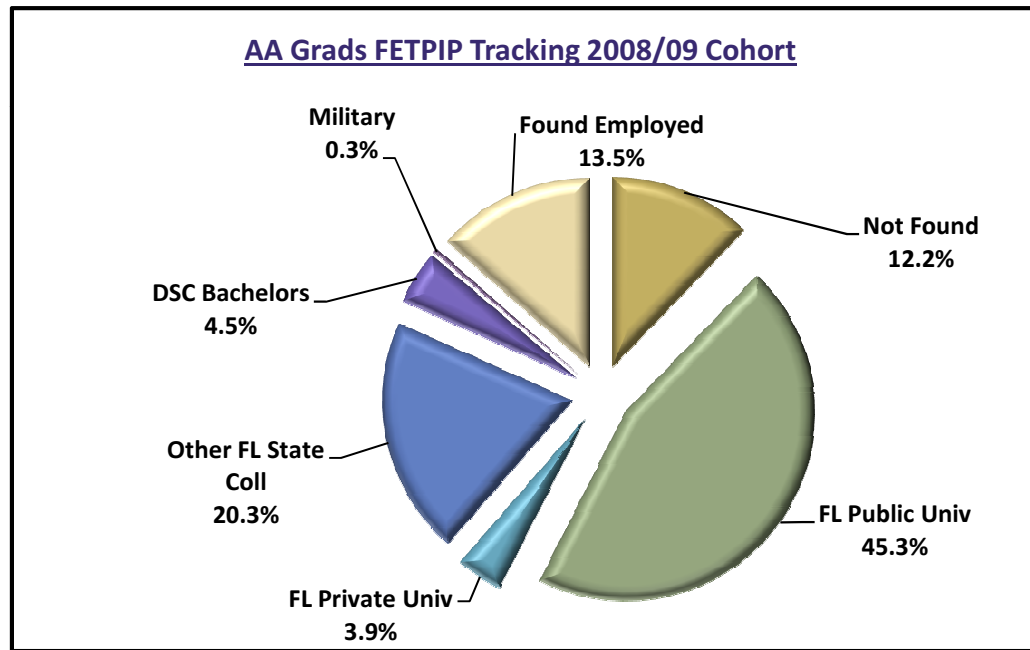
Associate of Arts Graduate Outcomes

Placement of Daytona State College AA Graduates - 2 Year Follow-up Tracking

Cohort Year	Year Reported	Total AA's reported	Not Found	Total Found	FL Public Univ	FL Private Univ	Other FL State Coll	DSC BACH	Military	Found Employed
2001/02	2003/04	843	87	756	457	50	102		1	146
2002/03	2004/05	803	2	801	455	39	86		0	221
2003/04	2005/06	887	94	793	470	40	92		2	189
2004/05	2006/07	851	87	764	506	41	74		4	139
2005/06	2007/08	950	92	858	545	32	100	20	6	155
2006/07	2008/09	978	103	875	518	42	116	18	0	181
2007/08	2009/10	1005	106	899	514	34	185	33	2	131
2008/09	2010/11	1277	156	1121	578	50	259	58	4	172

Note: Students found in the Fall term of the tracking year.

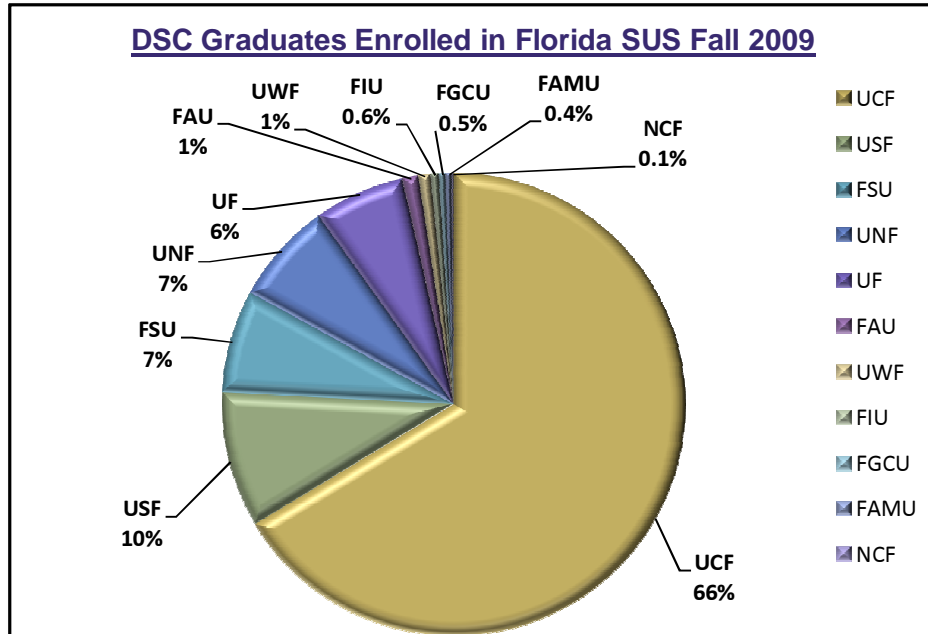
74% of the Daytona State College 2008/09 AA graduates are continuing their education.



DSC Transfer Students Attending Florida Universities

Transfer students receiving an AA degree at DSC who were found in the SUS.

Florida SUS School	Fall 2005		Fall 2006		Fall 2007		Fall 2008		Fall 2009	
	#	%	#	%	#	%	#	%	#	%
UCF	1348	65.9%	1413	65.6%	1365	64.6%	1376	64.8%	1421	66.3%
USF	151	7.4%	152	7.1%	138	6.5%	170	8.0%	203	9.5%
FSU	134	6.6%	146	6.8%	156	7.4%	137	6.5%	154	7.2%
UNF	196	9.6%	216	10.0%	198	9.4%	187	8.8%	153	7.1%
UF	152	7.4%	168	7.8%	183	8.7%	171	8.1%	135	6.3%
FAU	26	1.3%	18	0.8%	29	1.4%	39	1.8%	24	1.1%
UWF	5	0.2%	6	0.3%	8	0.4%	13	0.6%	18	0.8%
FIU	20	1.0%	24	1.1%	20	0.9%	13	0.6%	12	0.6%
FGCU	4	0.2%	4	0.2%	6	0.3%	9	0.4%	10	0.5%
FAMU	7	0.3%	6	0.3%	8	0.4%	7	0.3%	9	0.4%
NCF	2	0.1%	2	0.1%	1	0.0%	2	0.1%	3	0.1%
Total Found Transfers to SUS	2045	100.0%	2155	100.0%	2112	100.0%	2124	100.0%	2142	100.0%



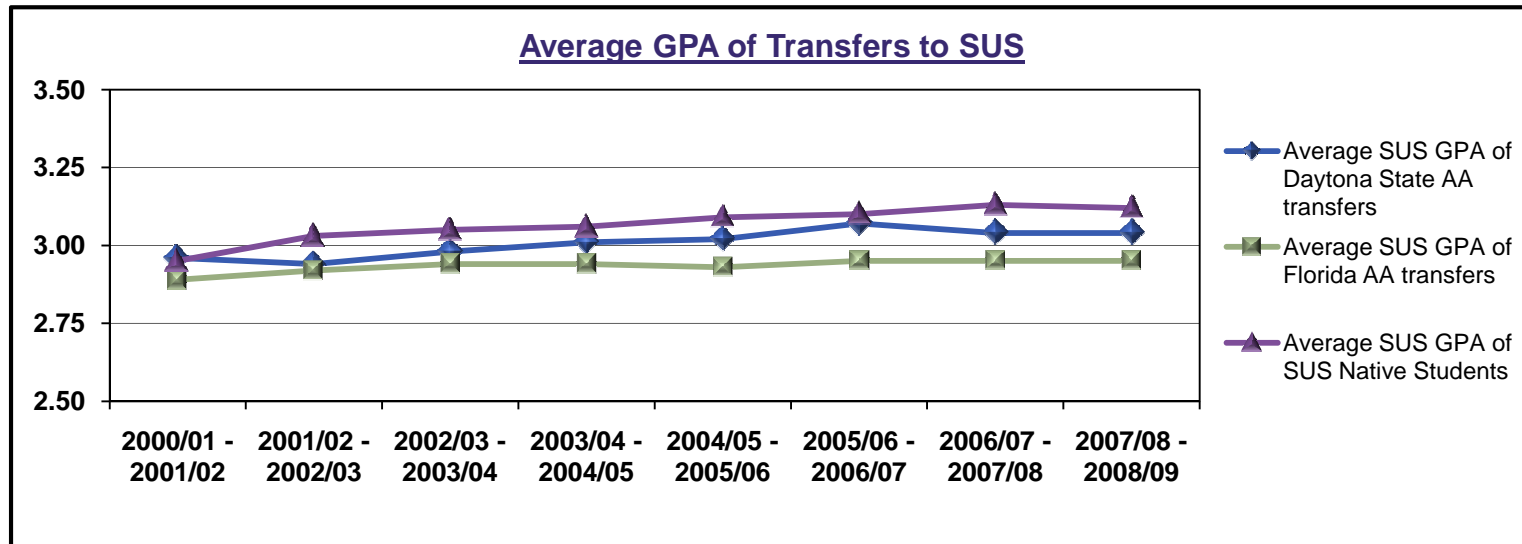
University of Central Florida has a 66% capture rate of Daytona State College graduates found in the State University System.

FL State Accountability Measure

AA Degree Performance in the State University System

AA graduates from cohort year who enrolled in the SUS in the following year.

DSC Grad Yr - SUS Transfer-In Yr	% of Daytona State transfers with ≥ 2.5 gpa	Florida's State University System (SUS)		
		Average SUS GPA of Daytona State AA transfers	Average SUS GPA of Florida AA transfers	Average SUS GPA of SUS Native Students
2000/01 - 2001/02	75.6%	2.96	2.89	2.95
2001/02 - 2002/03	74.3%	2.94	2.92	3.03
2002/03 - 2003/04	73.5%	2.98	2.94	3.05
2003/04 - 2004/05	78.1%	3.01	2.94	3.06
2004/05 - 2005/06	77.8%	3.02	2.93	3.09
2005/06 - 2006/07	81.8%	3.07	2.95	3.10
2006/07 - 2007/08	79.2%	3.04	2.95	3.13
2007/08 - 2008/09	79.4%	3.04	2.95	3.12



Graduate Placement Rates by Program FETPIP 2 Year Follow-up Tracking

Placement rates are based on the number of graduates found with employment related training divided by the total number of graduates found employed, continuing education or in the military.

Reporting Year	Tracking Cohort	AS		AAS		PSAV		PSVC		ATD*		APPR		TOTAL	
		DSC	State	DSC	State	DSC	State	DSC	State	DSC	State	DSC	State	DSC	State
2007/08	2005/06	87%	N/A	83%	N/A	85%	N/A	66%	N/A	77%	N/A	86%	N/A	83%	N/A
2008/09	2006/07	89%	87%	74%	80%	81%	82%	63%	80%	72%	78%	62%	74%	78%	82%
2009/10	2007/08	88%	87%	79%	81%	79%	79%	76%	81%	68%	77%	85%	78%	80%	82%
2010/11	2008/09	92%	89%	85%	85%	81%	82%	90%	87%	70%	79%	86%	82%	85%	85%

*ATD includes Emergency Medical Technician and Medical Record Transcription.

