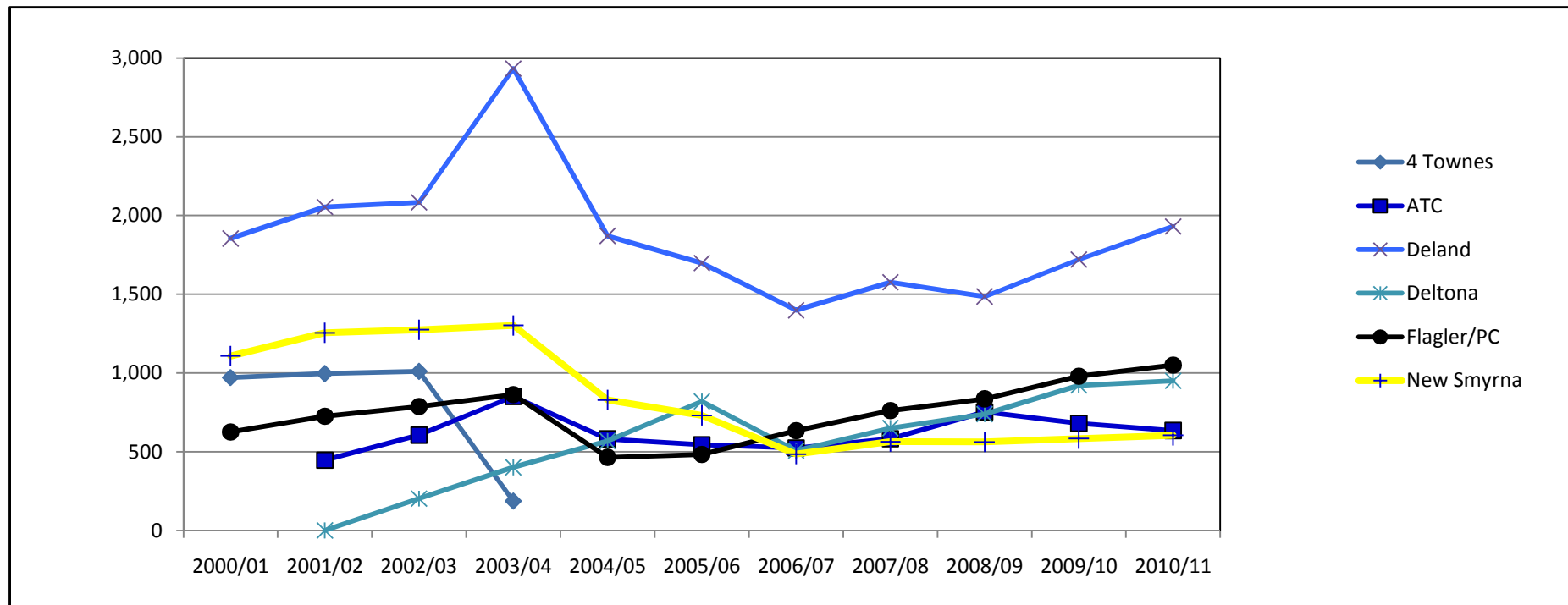


## Annual FTE (Funded) by Campus

YEAR	4 Townes	ATC	Daytona Beach	Deland	Deltona	Flagler/ Palm Coast	New Smyrna Beach	TOTAL
2000/01	971.9		10,432.1	1,854.2		626.0	1,109.0	14,993.1
2001/02	997.0	447.9	10,910.3	2,054.5	1.6	726.2	1,255.4	16,392.8
2002/03	1,011.1	606.7	11,245.6	2,083.3	203.8	788.1	1,275.2	17,213.9
2003/04	188.9	852.1	11,591.0	2,931.9	402.1	863.4	1,303.0	18,132.4
2004/05		582.4	7,570.8	1,870.9	568.7	465.5	829.7	11,888.0
2005/06		545.4	7,019.3	1,698.5	820.7	483.6	731.9	11,299.4
2006/07		524.8	6,837.7	1,398.8	507.3	635.4	486.2	10,390.2
2007/08		583.0	7,948.5	1,576.4	650.9	762.1	564.6	12,085.5
2008/09		753.6	9,003.1	1,486.2	739.9	836.5	563.4	13,382.7
2009/10		680.8	10,591.5	1,720.4	921.3	979.9	584.7	15,478.6
2010/11		635.7	11,067.7	1,930.7	951.2	1,051.1	605.2	16,241.6



Year	DAYTONA BEACH																			
	College Credit										Adult Education						Cont Educ	TOTAL		
	Upper			Lower							Total								Total	Total
	BAS	BS	Total	AP	PSV	CP	EPI	PSAV	APP	Total		ABE	ESOL	Spec Disab	AHS	GED	VPRP			
2000/01			2,950.0	1,288.4	476.2		417.8	608.3	9,278.1	9,278.1	521.8			256.8	263.3	0.2	1,042.1		111.9	10,432.1
2001/02			2,841.5	1,563.6	549.5		412.7	580.7	9,665.5	9,665.5	651.1	49.1		200.8	228.8	10.4	1,140.2	104.6	10,910.3	
2002/03			2,956.9	1,572.8	544.0		452.5	516.4	9,849.5	9,849.5	719.5	169.2		197.3	213.7	2.5	1,302.2	93.9	11,245.6	
2003/04			3,130.4	1,489.5	598.0		531.0	490.1	10,154.1	10,154.1	764.7	174.3		196.0	214.6	1.4	1,351.0	85.9	11,591.0	
2004/05			3,156.3	1,435.4	546.0		578.7	468.5	6,184.9	6,184.9	753.1	156.2		176.7	231.8	1.2	1,319.0	66.9	7,570.8	
2005/06	3.1		3.1	3,070.7	1,363.2	500.7	15.0	571.7	426.5	5,947.8	5,950.9	526.1	129.3		163.5	178.7	1.2	998.8	69.6	7,019.3
2006/07	75.2		75.2	3,287.9	1,446.7	532.8	68.2	593.9	435.0	6,364.5	6,439.7	179.3	54.4		36.8	51.2	4.3	326.0	72.0	6,837.7
2007/08	170.6		170.6	3,759.4	1,749.1	595.6	54.8	612.6	457.1	7,228.6	7,399.2	291.5	84.7		28.5	72.7	10.3	487.7	61.6	7,948.5
2008/09	271.7	12.7	284.4	4,401.1	1,874.9	633.1	29.7	609.8	471.1	8,019.7	8,304.1	420.1	93.8		26.6	88.6	5.4	634.5	64.5	9,003.1
2009/10	409.4	85.2	494.6	5,116.0	2,158.6	906.0	26.6	686.9	430.0	9,324.1	9,818.7	479.1	100.6		33.5	91.1		704.3	68.5	10,591.5
2010/11	474.0	157.0	631.1	5,678.3	2,261.4	932.6		601.1	326.3	9,799.7	10,430.8	458.9	86.3		25.4	66.3		636.9		11,067.7

- \* FTE = Credit Hours/30 (Credit Hours/40 prior to 2004/05. FTE converted for prior years for consistency.)
- \* Effective 1999/00, Special Disabled funded through categorical funds and not from the CCPF, not counted for Funded FTE.
- \* Adults with Disabilities, Lifelong Learning and Recreation and Leisure not included.
- \* ESOL courses included in ICS 13201 through FA01.
- \* AE FTE formula changed significantly in 2006/07 to include minimum 12 hour attendance requirement and FTE calculated on actual attendance hours.
- \* EPI first term FA05. Courses ended SP10. Students enrolled in upper division education courses.
- \* Upper- Includes BAS (first term SP06), BSED (first term SP09), BSET (first term FA10).
- \* VPRP offered for 0 Credits effective SP09.
- \* ATC High School program with Volusia and Flagler County schools discontinued after SP09.
- \* CWE not eligible for Funded FTE beginning SU10.
- \* ATC first term FA01. Deltona first term SU02. 4 Townes last term SU03.

Year	NEW SMYRNA BEACH / EDGEWATER																			
	College Credit										Adult Education						Cont Educ	TOTAL		
	Upper			Lower							Total								Total	Total
	BAS	BS	Total	AP	PSV	CP	EPI	PSAV	APP	Total		ABE	ESOL	Spec Disab	AHS	GED	VPRP			
2000/01			290.9	28.1	72.6		2.5	10.3	698.4	698.4	130.1			173.5	100.9		404.5		6.1	1,109.0
2001/02			293.1	61.7	91.4		6.4	28.2	815.6	815.6	154.0	1.2		156.4	124.9		436.5	3.3	1,255.4	
2002/03			284.7	81.4	80.2		12.6	18.2	812.0	812.0	159.4			205.8	96.5		461.7	1.5	1,275.2	
2003/04			282.5	81.6	84.9		9.0	29.9	824.8	824.8	150.6			233.9	93.4		477.9	0.3	1,303.0	
2004/05			250.3	61.1	56.1		6.9	49.9	424.3	424.3	156.5	0.1		159.6	89.2		405.4		829.7	
2005/06			235.1	50.7	56.4		3.9	36.8	382.9	382.9	161.4			114.5	73.1		349.0		731.9	
2006/07			245.9	44.6	65.9		7.3	40.2	403.9	403.9	41.8			27.2	11.7	1.5	82.2	0.1	486.2	
2007/08			274.1	50.6	79.9		0.3	60.0	464.9	464.9	47.4			29.5	17.4	4.7	99.0	0.7	564.6	
2008/09			322.9	31.9	97.6		7.1	20.1	479.6	479.6	41.5			17.5	23.2	1.4	83.6	0.2	563.4	
2009/10			362.4	29.0	128.3				519.7	519.7	44.0			2.7	18.1		64.8	0.2	584.7	
2010/11			400.8	30.8	113.5				545.1	545.1	44.2				15.9		60.1		605.2	

- \* FTE = Credit Hours/30 (Credit Hours/40 prior to 2004/05. FTE converted for prior years for consistency.)
- \* Effective 1999/00, Special Disabled funded through categorical funds and not from the CCPF, not counted for Funded FTE.
- \* Adults with Disabilities, Lifelong Learning and Recreation and Leisure not included.
- \* ESOL courses included in ICS 13201 through FA01.
- \* AE FTE formula changed significantly in 2006/07 to include minimum 12 hour attendance requirement and FTE calculated on actual attendance hours.
- \* EPI first term FA05. Courses ended SP10. Students enrolled in upper division education courses.
- \* Upper- Includes BAS (first term SP06), BSED (first term SP09), BSET (first term FA10).
- \* VPRP offered for 0 Credits effective SP09.
- \* ATC High School program with Volusia and Flagler County schools discontinued after SP09.
- \* CWE not eligible for Funded FTE beginning SU10.
- \* ATC first term FA01. Deltona first term SU02. 4 Townes last term SU03.

Year	FLAGLER / PALM COAST																TOTAL						
	College Credit										Adult Education							Cont Educ					
	Upper			Lower							Total							Total	Total				
	BAS	BS	Total	AP	PSV	CP	EPI	PSAV	APP	Total		ABE	ESOL	Spec Disab	AHS	GED				VPRP			
2000/01			270.8	31.1	47.2		15.0			626.0	626.0												626.0
2001/02			271.5	69.4	71.4		4.0			725.8	725.8	0.4						0.4					726.2
2002/03			282.4	87.7	77.0		5.0			787.6	787.6	0.4						0.4		0.1			788.1
2003/04			314.4	80.9	87.2		18.8			863.3	863.3	0.1						0.1					863.4
2004/05			322.2	61.7	71.8		9.5			465.2	465.2										0.3		465.5
2005/06			340.3	57.5	81.7		0.6			480.1	480.1	3.3						3.3		0.2			483.6
2006/07			408.2	62.7	112.7	18.0	1.2			602.8	602.8	14.4	15.6			1.6	0.8	32.4		0.2			635.4
2007/08			474.6	61.6	135.4	16.4	0.7			688.7	688.7	34.5	28.8			7.2	2.9	73.4					762.1
2008/09			560.3	39.2	136.7	16.2				752.4	752.4	41.8	34.7			6.2	1.3	84.0		0.1			836.5
2009/10			675.0	36.8	191.2					903.0	903.0	30.2	38.8			7.7		76.7		0.2			979.9
2010/11		3.6	735.3	38.4	201.5					975.2	978.8	25.5	38.8			8.0		72.3					1,051.1

- \* FTE = Credit Hours/30 (Credit Hours/40 prior to 2004/05. FTE converted for prior years for consistency.)
- \* Effective 1999/00, Special Disabled funded through categorical funds and not from the CCPF, not counted for Funded FTE.
- \* Adults with Disabilities, Lifelong Learning and Recreation and Leisure not included.
- \* ESOL courses included in ICS 13201 through FA01.
- \* AE FTE formula changed significantly in 2006/07 to include minimum 12 hour attendance requirement and FTE calculated on actual attendance hours.
- \* EPI first term FA05. Courses ended SP10. Students enrolled in upper division education courses.
- \* Upper- Includes BAS (first term SP06), BSED (first term SP09), BSET (first term FA10).
- \* VPRP offered for 0 Credits effective SP09.
- \* ATC High School program with Volusia and Flagler County schools discontinued after SP09.
- \* CWE not eligible for Funded FTE beginning SU10.
- \* ATC first term FA01. Deltona first term SU02. 4 Townes last term SU03.

Year	DELAND																			
	College Credit										Adult Education						Cont Educ	TOTAL		
	Upper			Lower							Total								Total	Total
	BAS	BS	Total	AP	PSV	CP	EPI	PSAV	APP	Total		ABE	ESOL	Spec Disab	AHS	GED	VPRP			
2000/01			708.9	115.3	161.0		34.0	76.1	1,834.5	1,834.5	0.7						0.7		19.0	1,854.2
2001/02			699.2	205.9	197.4		41.4	68.6	2,039.7	2,039.7	0.9						0.9	13.9	2,054.5	
2002/03			691.3	233.0	201.0		43.9	64.5	2,078.0	2,078.0	1.7						1.7	3.6	2,083.3	
2003/04			746.6	234.7	206.2		42.0	66.4	2,186.9	2,186.9	386.8	27.5		178.2	144.2		736.7	8.3	2,931.9	
2004/05			699.2	213.0	147.9		36.5	86.8	1,183.4	1,183.4	323.4	19.8		197.3	145.5		686.0	1.5	1,870.9	
2005/06			736.7	208.0	130.8		41.7	92.8	1,210.0	1,210.0	234.2	27.5		157.5	69.0		488.2	0.3	1,698.5	
2006/07			784.3	220.4	138.8		31.3	86.3	1,261.1	1,261.1	57.0	22.6		44.4	11.5	0.8	136.3	1.4	1,398.8	
2007/08	1.5	1.5	909.7	191.0	150.9	13.6	29.6	72.5	1,367.3	1,368.8	84.7	34.3		51.3	30.5	4.0	204.8	2.8	1,576.4	
2008/09	1.0	1.0	935.3	119.3	148.9	16.1	32.7	40.1	1,292.4	1,293.4	77.8	34.2		46.5	30.2	2.7	191.4	1.4	1,486.2	
2009/10			1,082.2	98.7	201.9		30.1	81.1	1,494.0	1,494.0	123.0	26.2		44.6	31.1		224.9	1.5	1,720.4	
2010/11	1.5	1.5	1,187.1	152.0	223.6		31.6	104.7	1,699.0	1,700.5	128.7	30.7		45.1	25.7		230.2		1,930.7	

- \* FTE = Credit Hours/30 (Credit Hours/40 prior to 2004/05. FTE converted for prior years for consistency.)
- \* Effective 1999/00, Special Disabled funded through categorical funds and not from the CCPF, not counted for Funded FTE.
- \* Adults with Disabilities, Lifelong Learning and Recreation and Leisure not included.
- \* ESOL courses included in ICS 13201 through FA01.
- \* AE FTE formula changed significantly in 2006/07 to include minimum 12 hour attendance requirement and FTE calculated on actual attendance hours.
- \* EPI first term FA05. Courses ended SP10. Students enrolled in upper division education courses.
- \* Upper- Includes BAS (first term SP06), BSED (first term SP09), BSET (first term FA10).
- \* VPRP offered for 0 Credits effective SP09.
- \* ATC High School program with Volusia and Flagler County schools discontinued after SP09.
- \* CWE not eligible for Funded FTE beginning SU10.
- \* ATC first term FA01. Deltona first term SU02. 4 Townes last term SU03.

Year	4 TOWNES																			
	College Credit										Adult Education						Cont Educ	TOTAL		
	Upper			Lower							Total								Total	Total
	BAS	BS	Total	AP	PSV	CP	EPI	PSAV	APP	Total		ABE	ESOL	Spec Disab	AHS	GED	VPRP			
2000/01			10.7					5.3		24.0	24.0	450.1				333.2	162.7		946.0	1.9
2001/02			0.4					8.4		9.1	9.1	485.6	45.8		274.6	180.2	986.2	1.7	997.0	
2002/03								10.1		10.1	10.1	468.4	96.4		250.1	181.5	996.4	4.6	1,011.1	
2003/04										0.0	0.0	74.2	26.2		48.1	40.4	188.9		188.9	

- \* FTE = Credit Hours/30 (Credit Hours/40 prior to 2004/05. FTE converted for prior years for consistency.)
- \* Effective 1999/00, Special Disabled funded through categorical funds and not from the CCPF, not counted for Funded FTE.
- \* Adults with Disabilities, Lifelong Learning and Recreation and Leisure not included.
- \* ESOL courses included in ICS 13201 through FA01.
- \* AE FTE formula changed significantly in 2006/07 to include minimum 12 hour attendance requirement and FTE calculated on actual attendance hours.
- \* EPI first term FA05. Courses ended SP10. Students enrolled in upper division education courses.
- \* Upper- Includes BAS (first term SP06), BSED (first term SP09), BSET (first term FA10).
- \* VPRP offered for 0 Credits effective SP09.
- \* ATC High School program with Volusia and Flagler County schools discontinued after SP09.
- \* CWE not eligible for Funded FTE beginning SU10.
- \* ATC first term FA01. Deltona first term SU02. 4 Townes last term SU03.

Year	DELTONA																			
	College Credit										Adult Education						Cont Educ	TOTAL		
	Upper			Lower							Total								Total	Total
	BAS	BS	Total	AP	PSV	CP	EPI	PSAV	APP	Total		ABE	ESOL	Spec Disab	AHS	GED	VPRP			
2001/02																	0.0		1.6	1.6
2002/03				46.9	22.8	31.5				177.1	177.1		21.7		3.9		25.6	1.1	203.8	
2003/04				61.2	21.9	28.7				195.5	195.5	24.9	140.7		38.7		204.3	2.3	402.1	
2004/05				118.7	52.9	63.7				235.3	235.3	77.4	159.2		95.0		331.6	1.8	568.7	
2005/06				144.6	72.7	62.5				279.8	279.8	259.6	181.4		94.6		535.6	5.3	820.7	
2006/07	2.3		2.3	173.7	61.8	82.4		11.6		329.5	331.8	82.6	67.8		24.2		174.6	0.9	507.3	
2007/08	3.6		3.6	217.1	52.2	106.5		4.3		380.1	383.7	129.7	92.7		44.2	0.2	266.8	0.4	650.9	
2008/09			0.0	216.5	59.9	132.0			46.8	455.2	455.2	139.8	100.9		43.8		284.5	0.2	739.9	
2009/10			0.0	261.1	53.6	202.3			76.2	593.2	593.2	179.9	91.1		57.0		328.0	0.1	921.3	
2010/11			0.0	278.7	56.2	199.1			75.3	609.3	609.3	197.1	90.6		54.2		341.9		951.2	

\* FTE = Credit Hours/30 (Credit Hours/40 prior to 2004/05. FTE converted for prior years for consistency.)  
 \* Effective 1999/00, Special Disabled funded through categorical funds and not from the CCPF, not counted for Funded FTE.  
 \* Adults with Disabilities, Lifelong Learning and Recreation and Leisure not included.  
 \* ESOL courses included in ICS 13201 through FA01.  
 \* AE FTE formula changed significantly in 2006/07 to include minimum 12 hour attendance requirement and FTE calculated on actual attendance hours.  
 \* EPI first term FA05. Courses ended SP10. Students enrolled in upper division education courses.  
 \* Upper- Includes BAS (first term SP06), BSED (first term SP09), BSET (first term FA10).  
 \* VPRP offered for 0 Credits effective SP09.  
 \* ATC High School program with Volusia and Flagler County schools discontinued after SP09.  
 \* CWE not eligible for Funded FTE beginning SU10.  
 \* ATC first term FA01. Deltona first term SU02. 4 Townes last term SU03.

Year	ATC																			
	College Credit										Adult Education						Cont Educ	TOTAL		
	Upper			Lower							Total								Total	Total
	BAS	BS	Total	AP	PSV	CP	EPI	PSAV	APP	Total		ABE	ESOL	Spec Disab	AHS	GED	VPRP			
2001/02			26.3	116.2	3.7		38.0	69.6	363.5	363.5				82.8			82.8		1.6	447.9
2002/03			37.2	172.5	4.3		60.4	49.8	484.6	484.6				118.0			118.0	4.1	606.7	
2003/04			31.7	289.9	2.9		78.4	52.0	698.4	698.4				144.8			144.8	8.9	852.1	
2004/05			47.2	281.5			70.6	56.6	455.9	455.9				122.3			122.3	4.2	582.4	
2005/06			40.7	270.3			59.3	52.2	422.5	422.5				114.6			114.6	8.3	545.4	
2006/07			37.2	276.0			54.3	52.1	419.6	419.6				100.1			100.1	5.1	524.8	
2007/08			40.1	278.4			109.6	51.8	479.9	479.9				99.2	0.7		99.9	3.2	583.0	
2008/09			51.8	476.4	9.5		109.7	30.9	678.3	678.3				72.7	0.2		72.9	2.4	753.6	
2009/10			73.5	422.5	5.4		146.5	30.4	678.3	678.3								2.5	680.8	
2010/11	64.1	64.1	7.7	396.4	0.9		146.3	20.3	571.6	635.7									635.7	

\* FTE = Credit Hours/30 (Credit Hours/40 prior to 2004/05. FTE converted for prior years for consistency.)  
 \* Effective 1999/00, Special Disabled funded through categorical funds and not from the CCPF, not counted for Funded FTE.  
 \* Adults with Disabilities, Lifelong Learning and Recreation and Leisure not included.  
 \* ESOL courses included in ICS 13201 through FA01.  
 \* AE FTE formula changed significantly in 2006/07 to include minimum 12 hour attendance requirement and FTE calculated on actual attendance hours.  
 \* EPI first term FA05. Courses ended SP10. Students enrolled in upper division education courses.  
 \* Upper- Includes BAS (first term SP06), BSED (first term SP09), BSET (first term FA10).  
 \* VPRP offered for 0 Credits effective SP09.  
 \* ATC High School program with Volusia and Flagler County schools discontinued after SP09.  
 \* CWE not eligible for Funded FTE beginning SU10.  
 \* ATC first term FA01. Deltona first term SU02. 4 Townes last term SU03.